



Empire Wind Survey Update

June 2020



Floating LIDAR center of Empire Wind lease

Equinor Wind US

Equinor Wind continues planning the Empire Wind / Boardwalk Wind project(s) in BOEM lease area OCSA-0512. The area extends from 14 miles south of Long Island, spanning 79,350 acres, in water depths between 65 and 131 feet (10-22 fathoms).

LNTM: Installed Moorings

FLiDAR buoys and a subsurface mooring are located in the center of the lease area.

Subsurface Mooring 15' below surface:
40° 17.9107'N; 073° 20.0119'W

Floating Lidar buoy 1 (central):
40° 17.6496'N; 073° 19.382'W

Met/Wave buoy:
40° 17.426'N; 073° 18.7588'W

Floating Lidar buoy 2 (west):
40° 21.6095'N; 073° 30.0998'W (target)

Metocean maintenance will begin the same week, June 22, 2020 as the CPT survey.



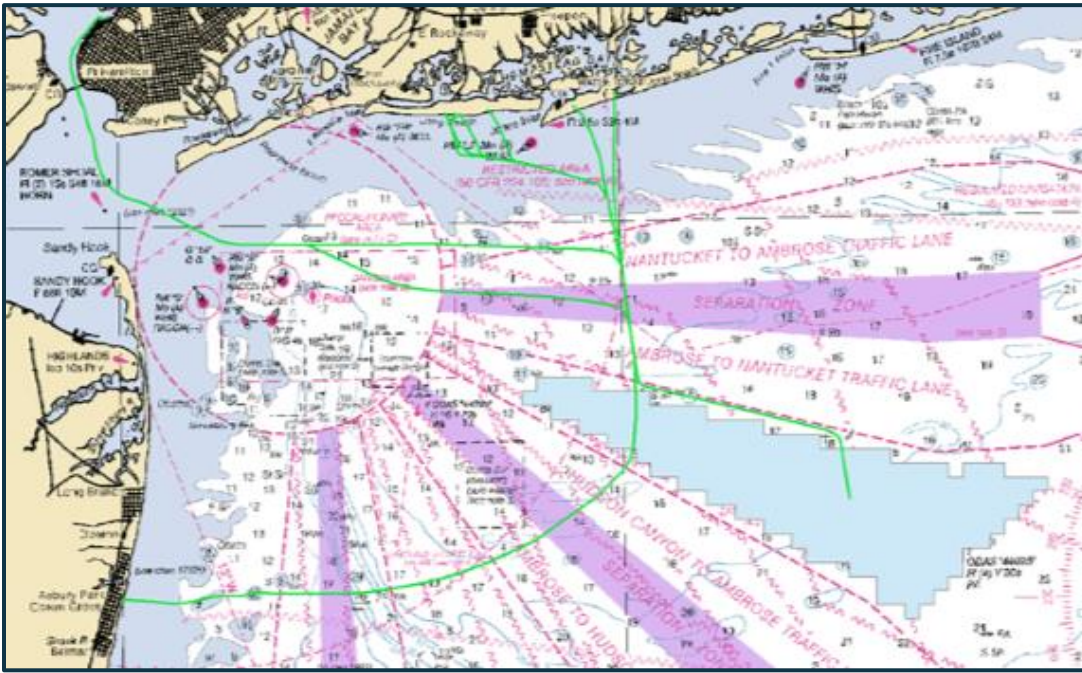
2020 Offshore Surveys Continue

Planned surveys for the Equinor Wind NY Bight Offshore Wind Lease are scheduled to begin June 22, 2020.

Equinor Wind US is the lease holder of the New York offshore wind energy area OCS-A 0512 known as the 'Empire Wind' and 'Boardwalk Wind' projects. As part of the site development process, Equinor has been conducting surveys since Spring 2018.

Geophysical and geotechnical surveys will resume in the Empire Wind area late June 2020. Cone Penetration Tests (CPT) will be conducted within the lease area. CPT samples assists with site investigation for wind turbine generators and substations. Borings and vibracore samples will also be conducted.

Indicative Offshore Lease Survey Area (WGS84)					
ID	Latitude (dec. deg)	Longitude (dec. deg)	Latitude (deg. min. sec)	Longitude (deg. min. sec)	Loran Coordinates
1	40.19023	-073.2144	40° 11' 24.83"	-073° 12' 51.77"	26584.04 – 43507.38
2	40.20521	-073.2516	40° 12' 18.76"	-073° 15' 05.72"	26605.31 – 43518.46
3	40.36530	-073.6098	40° 21' 55.08"	-073° 36' 35.42"	26790.20 – 43628.19
4	40.39004	-073.5764	40° 23' 24.18"	-073° 34' 35.17"	26778.55 – 43642.60
5	40.31128	-073.1218	40° 18' 40.61"	-073° 07' 18.35"	26554.98 – 43569.94
6	40.29690	-073.0692	40° 17' 48.84"	-073° 04' 09.19"	26529.05 – 43558.52



Offshore supply vessels, Royal and Highland Eagle will be conducting Geophysical and Geotechnical surveys Summer and Fall 2020.

Due to the COVID-19 Pandemic

Offshore fisheries representatives will not be onboard during the CPT survey. Mitigation measures to ensure minimized conflicts with fishing gear and vessels include:

- ✓ Regular communication with fishermen working in and around the area
- ✓ Survey Captain and crew understanding and acknowledge Equinor's Guidelines for Survey & Fisheries
- ✓ Daily AIS 24-hour history to survey vessel
- ✓ Notice to Mariners distributed in advance
- ✓ Survey crew record any observation of fishing vessels either working or transiting lease area
- ✓ Daily report from survey vessel to FLs regarding fishing activity



Name: **HIGHLAND EAGLE**
 Call Sign: **VQIE5**
 Flag: **United Kingdom**
https://www.marinetraffic.com/en/ais/details/ships/shipid:202977/mmsi:235639000/imo:9249465/vessel:HIGHLAND_EAGLE



Name: **ROYAL**
 Call Sign: **WDD3653**
 Flag: **American**
<https://www.marinetraffic.com/en/ais/details/ships/shipid:430703/mmsi:36694490/imo:9315525/vessel:ROYAL>

Fisheries Liaison Contacts:

Sea Risk Solutions is representing Equinor Wind as Fisheries Liaison Officers and are available 24/7 to address fisheries questions and concerns of project developments.

Elizabeth Marchetti
emarc@equinor.com
emarchetti@searisksolutions.com
 401-954-2902

Steve Drew
sdrew@searisksolutions.com
 908-339-7439

<https://www.equinor.com/en/what-we-do/empirewind.html>
<https://www.facebook.com/groups/597095231201268/>
<http://www.searisksolutions.com/>