

Empire Offshore Wind LLC

Empire Wind 1 Project

Article VII Application

Attachment to Deficiency Response No. 3:

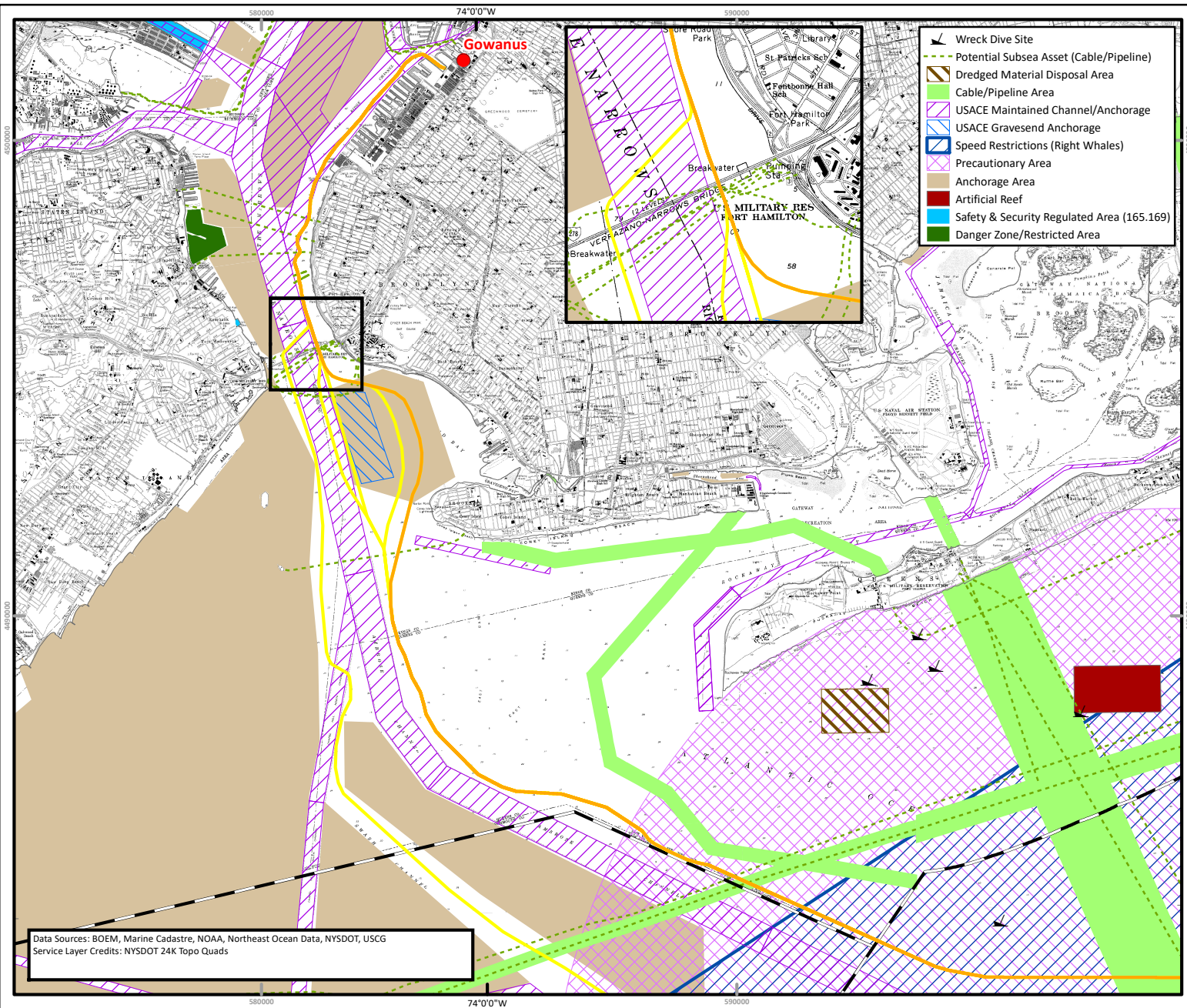
Figure 3.5-1

Figure 3.5-2



Figure 3.6-1

Figure 3.7-1

October 2021



EMPIRE OFFSHORE WIND EMPIRE WIND 1 PROJECT



Preferred POI

Submarine Export Cable Route

Submarine Export Cable Route Alternative

State Territorial Waters Boundary


Date	September 30, 2021
File/Job Number	194-6047
Personnel	Figure Prepared by: William Scales

0 0.5 1 1.5 2 Miles

0 0.5 1 1.5 2 Nautical Miles

0 1 2 3 4 Kilometers

REFERENCE MAP



N

Data Sources: BOEM, Marine Cadastre, NOAA, Northeast Ocean Data, NYSDOT, USCG
Service Layer Credits: NYSDOT 24K Topo Quads

NOT FOR CONSTRUCTION

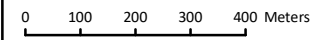
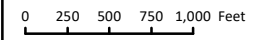


EMPIRE OFFSHORE WIND EMPIRE WIND 1 PROJECT

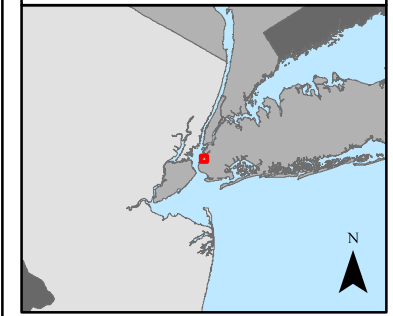


- Gowanus POI
- Onshore Substation Alternative
- Preferred Onshore Substation

Date	September 16, 2021
File/Job Number	194-6047
Personnel	Figure Prepared by: William Scales



REFERENCE MAP



Data Sources: NYSDOT
Service Layer Credits: NYSDOT 24K Topo Quads

EMPIRE OFFSHORE WIND EMPIRE WIND 1 PROJECT



- ▲ Gowanus POI
- Preferred Onshore Substation
- Cable Landfall Alternative
- Preferred Landfall
- Onshore Cable Route Alternative
- Preferred Route
- Submarine Export Cable Route

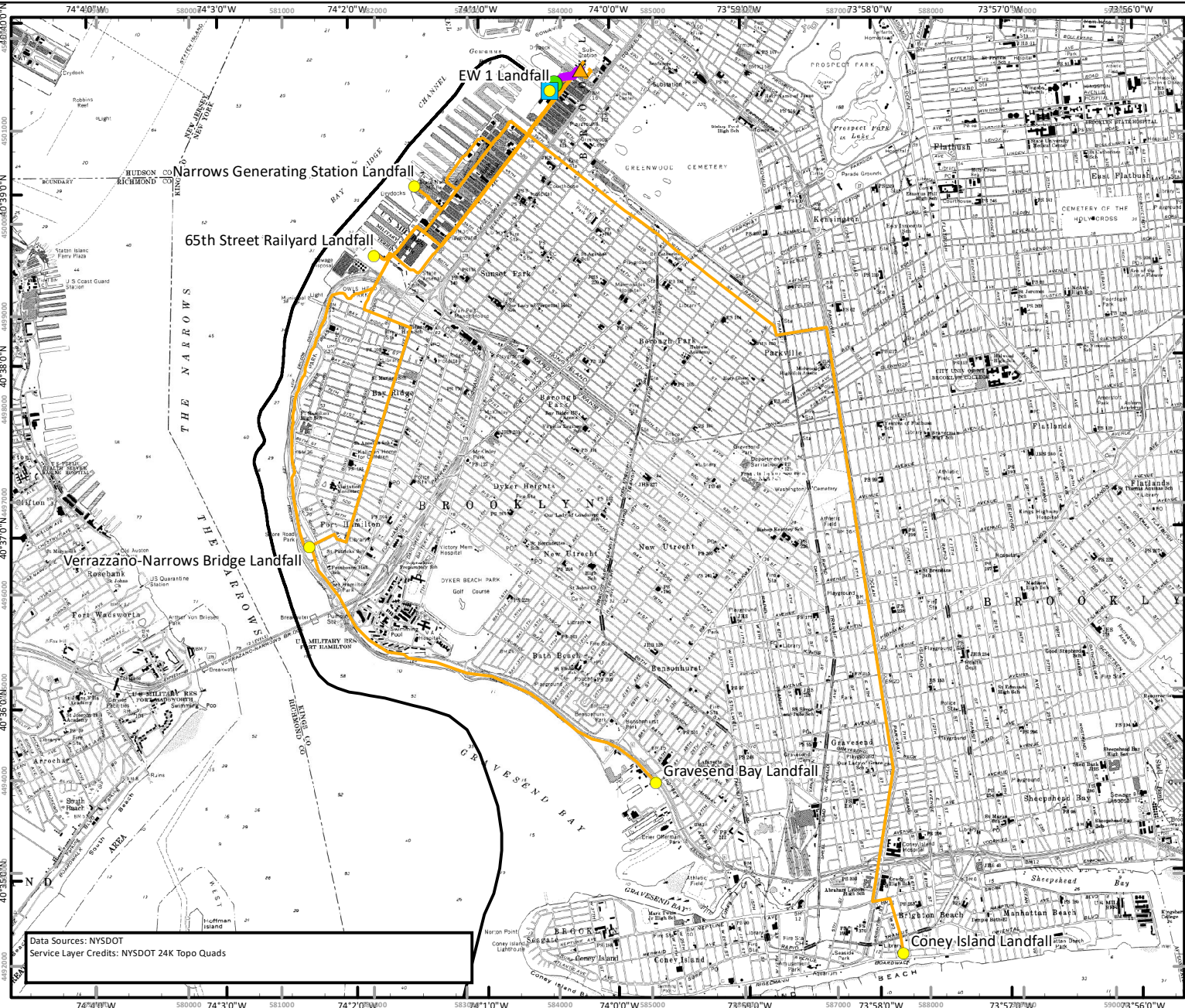
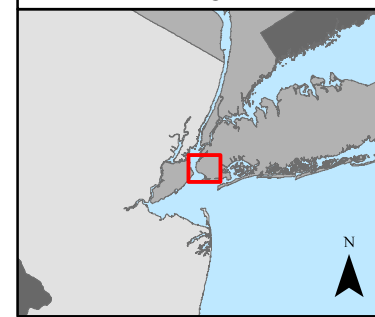
Date	September 16, 2021
File/Job Number	194-6047
Personnel	Figure Prepared by: William Scales

0 0.25 0.5 0.75 1 Miles

0 0.25 0.5 0.75 1 Nautical Miles

0 0.5 1 1.5 2 Kilometers

REFERENCE MAP



Data Sources: NYSDOT
Service Layer Credits: NYSDOT 24K Topo Quads