

## NOTICE TO MARINERS

### Firefly Offshore Wind Farm Marine Survey

Date of Issue	January 18, 2022
Notice to Mariner Number	Firefly-NtM-03

### Marine Survey Information

Location Description	Firefly offshore wind farm and export cable corridor
Work Location	Details in table below
Work Scopes	Seabird and marine mammal survey
Estimated Start Date	January 25, 2022
Estimated End Date	January 29, 2022

### Description of Hazard/Operation


The survey vessel M/V Dolphin Wind will undertake seabird and marine mammal survey works along with the Firefly offshore wind farm areas and export cable route in Ulsan offshore and coastal areas.

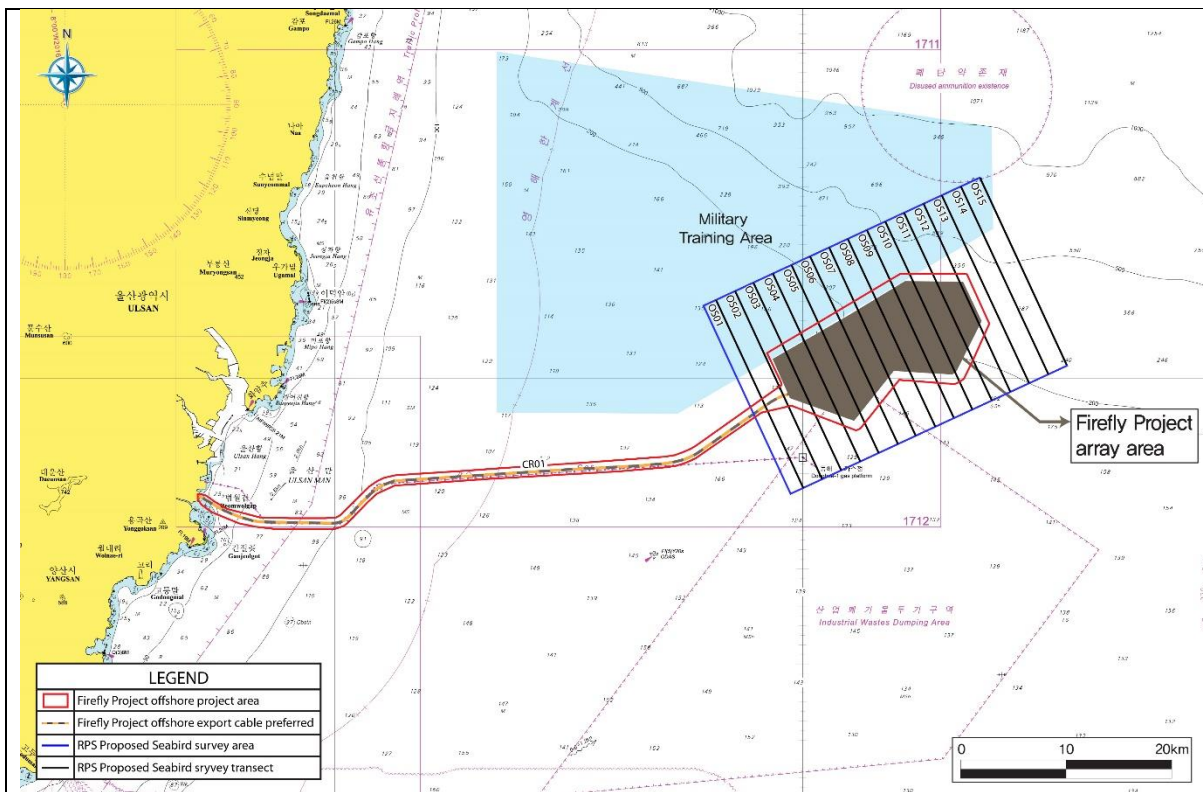
During the operations, the vessel will be restricted in its ability to maneuver and will display the appropriate day shapes and lights. Passing vessels are requested to maintain a minimum 500m safety distance from M/V Dolphin Wind, reducing speed to minimize wake disturbance.

### Contact Details

Marine Coordination Contact	Kiwon Seo <a href="mailto:KSEO@equinor.com">KSEO@equinor.com</a> / Mobile: +82-(0)10-5144-5127
FLO Contact	John J.W. Hwang - Mtide Offshore Co., Ltd. <a href="mailto:offshorekorea@mtideoffshore.com">offshorekorea@mtideoffshore.com</a> Office: +82-(0)51-404-0071 / Mobile: +82-(0)10-5627-1727
Contractor Contact	JunHyung Jun- Sekwang Engineering Consultant Co., Ltd. <a href="mailto:junhyung28@naver.com">junhyung28@naver.com</a> / Mobile: +82-(0)10-5623-5653

### Supporting Information

Vessel Name - M/V Dolphin Wind	Vessel Contact Details	
	Call Sign	D7XA
	MMSI	441419000
	IMO	9776353
	VHF Ch.	16
	Sat. Tel.	+881-6326-77854
	Vessel Details	
	Length	35.53m
	Breadth	10.0m
	Draft	4.0m
	Gross Tonnage	293ton
Year Built	2017	
Other Information		
Special Craft: Tug ship, survey		



## Survey Area Coordinate

Coordinate System : WGS 1984 UTM Zone 52N

Station		Location	Coordination	
			latitude	longitude
OS01	Start	Offshore transect	35° 24' 3.940" N	129° 59' 47.539" E
OS01	End	Offshore transect	35° 33' 55.760" N	129° 54' 21.450" E
OS02	Start	Offshore transect	35° 24' 30.580" N	130° 0' 59.842" E
OS02	End	Offshore transect	35° 34' 22.451" N	129° 55' 33.873" E
OS03	Start	Offshore transect	35° 24' 57.207" N	130° 2' 12.158" E
OS03	End	Offshore transect	35° 34' 49.130" N	129° 56' 46.309" E
OS04	Start	Offshore transect	35° 25' 23.822" N	130° 3' 24.487" E
OS04	End	Offshore transect	35° 35' 15.797" N	129° 57' 58.759" E
OS05	Start	Offshore transect	35° 25' 50.425" N	130° 4' 36.829" E
OS05	End	Offshore transect	35° 35' 42.451" N	129° 59' 11.221" E
OS06	Start	Offshore transect	35° 26' 17.015" N	130° 5' 49.184" E
OS06	End	Offshore transect	35° 36' 9.093" N	130° 0' 23.696" E
OS07	Start	Offshore transect	35° 26' 43.593" N	130° 7' 1.552" E
OS07	End	Offshore transect	35° 36' 35.723" N	130° 1' 36.185" E
OS08	Start	Offshore transect	35° 27' 10.159" N	130° 8' 13.933" E
OS08	End	Offshore transect	35° 37' 2.340" N	130° 2' 48.687" E
OS09	Start	Offshore transect	35° 27' 36.713" N	130° 9' 26.326" E
OS09	End	Offshore transect	35° 37' 28.945" N	130° 4' 1.202" E
OS10	Start	Offshore transect	35° 28' 3.254" N	130° 10' 38.733" E
OS10	End	Offshore transect	35° 37' 55.538" N	130° 5' 13.730" E
OS11	Start	Offshore transect	35° 28' 29.782" N	130° 11' 51.153" E
OS11	End	Offshore transect	35° 38' 22.118" N	130° 6' 26.271" E
OS12	Start	Offshore transect	35° 28' 56.299" N	130° 13' 3.585" E
OS12	End	Offshore transect	35° 38' 48.685" N	130° 7' 38.825" E
OS13	Start	Offshore transect	35° 29' 22.803" N	130° 14' 16.031" E
OS13	End	Offshore transect	35° 39' 15.241" N	130° 8' 51.392" E
OS14	Start	Offshore transect	35° 29' 49.294" N	130° 15' 28.489" E
OS14	End	Offshore transect	35° 39' 41.784" N	130° 10' 3.972" E

OS15	Start	Offshore transect	35° 30' 15.774" N	130° 16' 40.961" E
OS15	End	Offshore transect	35° 40' 8.314" N	130° 11' 16.565" E
CR01	A	Cable route transect	35° 25' 26.642" N	129° 51' 28.377" E
CR01	B	Cable route transect	35° 24' 34.107" N	129° 34' 19.033" E
CR01	C	Cable route transect	35° 24' 10.648" N	129° 32' 42.898" E
CR01	D	Cable route transect	35° 22' 26.513" N	129° 30' 25.861" E
CR01	E	Cable route transect	35° 22' 30.718" N	129° 24' 25.325" E