

## NOTICE TO MARINERS

### Firefly Offshore Wind Farm Marine Survey

Date of Issue	December 6, 2021
Notice to Mariner Number	01

### Marine Survey Information

Location Description	Firefly offshore wind farm and export cable corridor
Work Location	Details in table below
Work Scopes	Seabird and marine mammal survey
Estimated Start Date	December 13, 2021
Estimated End Date	December 17, 2021

### Description of Hazard/Operation

The survey vessel M/V Dolphin Wind will undertake seabird and marine mammal survey works along with the Firefly offshore wind farm areas and export cable route in Ulsan offshore and coastal areas.

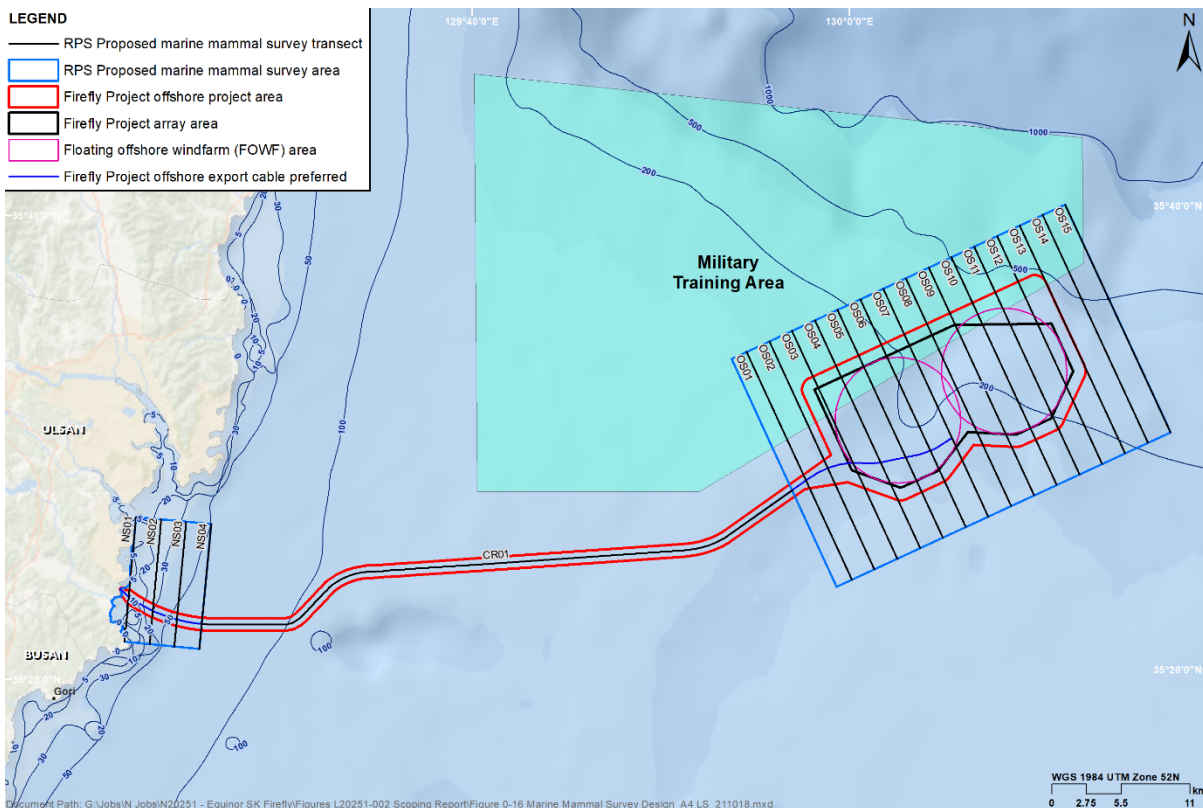
During the operations, the vessel will be restricted in its ability to maneuver and will display the appropriate day shapes and lights. Passing vessels are requested to maintain a minimum 500m safety distance from M/V Dolphin Wind, reducing speed to minimize wake disturbance.

### Contact Details

Marine Coordination Contact	Kiwon Seo <a href="mailto:KSEO@equinor.com">KSEO@equinor.com</a>
FLO Contact	John J.W. Hwang - Mtide Offshore Co., Ltd. <a href="mailto:offshorekorea@mtideoffshore.com">offshorekorea@mtideoffshore.com</a> Office: +82-(0)51-404-0071 / Mobile: +82-(0)10-5627-1727
Contractor Contact	Kevin Sungjun Kim - Sekwang Engineering Consultant Co., Ltd. <a href="mailto:kevinkim.ske@gmail.com">kevinkim.ske@gmail.com</a> Mobile: +82-(0)10-3126-9878

### Supporting Information

Vessel Name - M/V Dolphin Wind	Vessel Contact Details	
	Call Sign	D7XA
	MMSI	441419000
	IMO	9776353
	VHF Ch.	16
	Sat. Tel.	+881-6326-77854
	Vessel Details	
	Length	35.53m
	Breadth	10.0m
	Draft	4.0m
	Gross Tonnage	293ton
Year Built	2017	
Other Information		
Special Craft: Tug ship, survey		



## Survey Area Coordinate

Coordinate System: WGS 1984 UTM Zone 52N				
Location	Transect ID	Order	Latitude (DMS)	Longitude (DMS)
Nearshore transect	NS01	Start	35° 21' 34.673" N	129° 21' 46.543" E
Nearshore transect	NS01	End	35° 24' 6.880" N	129° 21' 47.225" E
Nearshore transect	NS02	Start	35° 21' 34.552" N	129° 22' 26.168" E
Nearshore transect	NS02	End	35° 26' 59.151" N	129° 22' 27.668" E
Nearshore transect	NS03	Start	35° 21' 34.427" N	129° 23' 5.792" E
Nearshore transect	NS03	End	35° 26' 59.026" N	129° 23' 7.336" E
Nearshore transect	NS04	Start	35° 21' 34.299" N	129° 23' 45.417" E
Nearshore transect	NS04	End	35° 26' 58.898" N	129° 23' 47.005" E
Nearshore transect	NS05	Start	35° 21' 34.168" N	129° 24' 25.041" E
Nearshore transect	NS05	End	35° 26' 58.766" N	129° 24' 26.674" E
Offshore transect	OS01	Start	35° 24' 3.940" N	129° 59' 47.539" E
Offshore transect	OS01	End	35° 33' 55.760" N	129° 54' 21.450" E
Offshore transect	OS02	Start	35° 24' 30.580" N	130° 0' 59.842" E
Offshore transect	OS02	End	35° 34' 22.451" N	129° 55' 33.873" E
Offshore transect	OS03	Start	35° 24' 57.207" N	130° 2' 12.158" E
Offshore transect	OS03	End	35° 34' 49.130" N	129° 56' 46.309" E
Offshore transect	OS04	Start	35° 25' 23.822" N	130° 3' 24.487" E
Offshore transect	OS04	End	35° 35' 15.797" N	129° 57' 58.759" E
Offshore transect	OS05	Start	35° 25' 50.425" N	130° 4' 36.829" E
Offshore transect	OS05	End	35° 35' 42.451" N	129° 59' 11.221" E
Offshore transect	OS06	Start	35° 26' 17.015" N	130° 5' 49.184" E
Offshore transect	OS06	End	35° 36' 9.093" N	130° 0' 23.696" E
Offshore transect	OS07	Start	35° 26' 43.593" N	130° 7' 1.552" E
Offshore transect	OS07	End	35° 36' 35.723" N	130° 1' 36.185" E
Offshore transect	OS08	Start	35° 27' 10.159" N	130° 8' 13.933" E
Offshore transect	OS08	End	35° 37' 2.340" N	130° 2' 48.687" E
Offshore transect	OS09	Start	35° 27' 36.713" N	130° 9' 26.326" E
Offshore transect	OS09	End	35° 37' 28.945" N	130° 4' 1.202" E
Offshore transect	OS10	Start	35° 28' 3.254" N	130° 10' 38.733" E
Offshore transect	OS10	End	35° 37' 55.538" N	130° 5' 13.730" E
Offshore transect	OS11	Start	35° 28' 29.782" N	130° 11' 51.153" E
Offshore transect	OS11	End	35° 38' 22.118" N	130° 6' 26.271" E
Offshore transect	OS12	Start	35° 28' 56.299" N	130° 13' 3.585" E
Offshore transect	OS12	End	35° 38' 48.685" N	130° 7' 38.825" E
Offshore transect	OS13	Start	35° 29' 22.803" N	130° 14' 16.031" E
Offshore transect	OS13	End	35° 39' 15.241" N	130° 8' 51.392" E

Offshore transect	OS14	Start	35° 29' 49.294" N	130° 15' 28.489" E
Offshore transect	OS14	End	35° 39' 41.784" N	130° 10' 3.972" E
Offshore transect	OS15	Start	35° 30' 15.774" N	130° 16' 40.961" E
Offshore transect	OS15	End	35° 40' 8.314" N	130° 11' 16.565" E
Cable route transect	CR01	Start- A	35° 22' 30.718" N	129° 24' 25.325" E
Cable route transect	CR01	B	35° 22' 21.592" N	129° 30' 12.589" E
Cable route transect	CR01	C	35° 24' 19.261" N	129° 33' 3.111" E
Cable route transect	CR01	D	35° 25' 33.375" N	129° 52' 4.665" E
Cable route transect	CR01	E- End	35° 27' 56.458" N	129° 56' 41.765" E