

# Exciting exploration plans NCS 2014

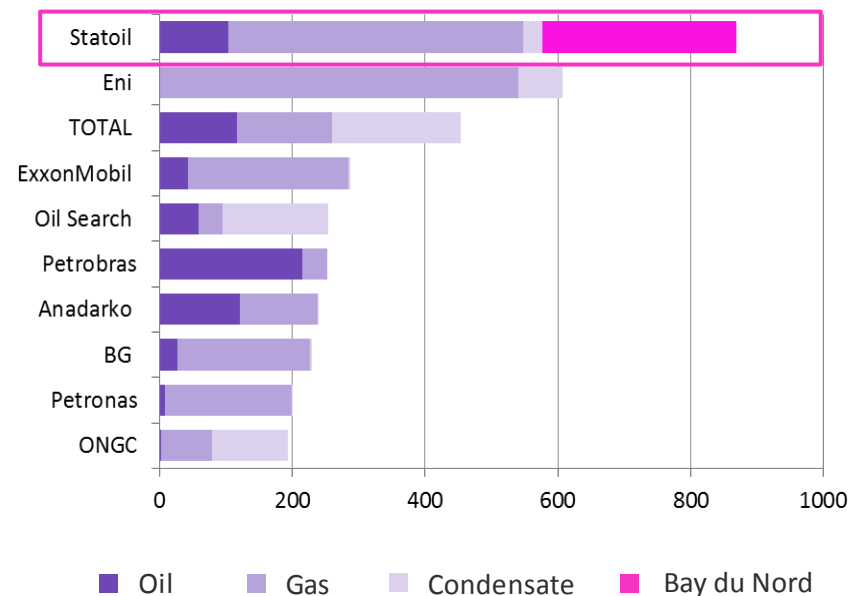
Gro G. Haatvedt, Senior Vice President,  
Exploration Norway

# Statoil leading conventional discovered volume

## NCS discoveries in top league

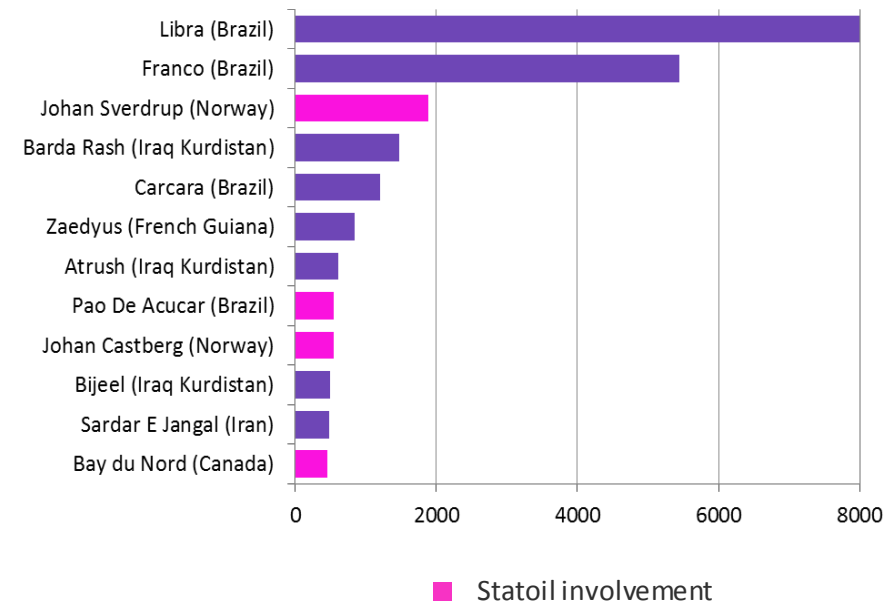
### Conventional discovered volume, by company\*

2013 YTD, mmbœ (net to company)



### Largest conventional oil discoveries\*\*

2010 - 2013 YTD, total oil recoverable mmbbl (total field 2P reserves)



\* Includes Bay du Nord volumes of 292.5 mmbbls net to Statoil (65% equity)

\*\* Include Bay du Nord volumes of 450 mmbbls

Source: IHS & Statoil

Includes content supplied by IHS Global SA; Copyright © IHS Global SA, 2013. All rights reserved

Source: IHS & Statoil



# Solid exploration results, strategy stays firm

Revitalising Norwegian Continental Shelf with high-value barrels

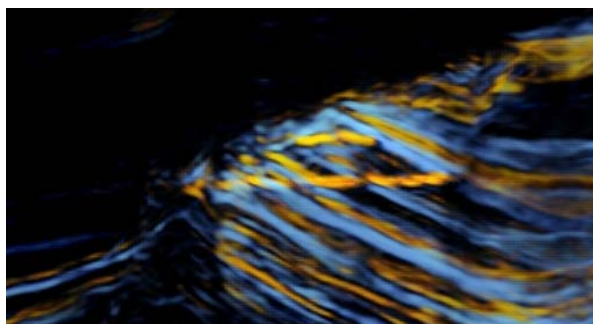
GROWTH  
EXPLORATION



FRONTIER  
EXPLORATION



TIMELY ILX  
EXPLORATION



Solid NCS exploration results during the last five years:  
Statoil discovery rate of over **70%** against the industry average of **49%\***

*\* Based on the Norwegian Petroleum Directorate statistics*

# NCS exploration outlook 2014

High exploration activity with 20-25 wells

## Barents Sea

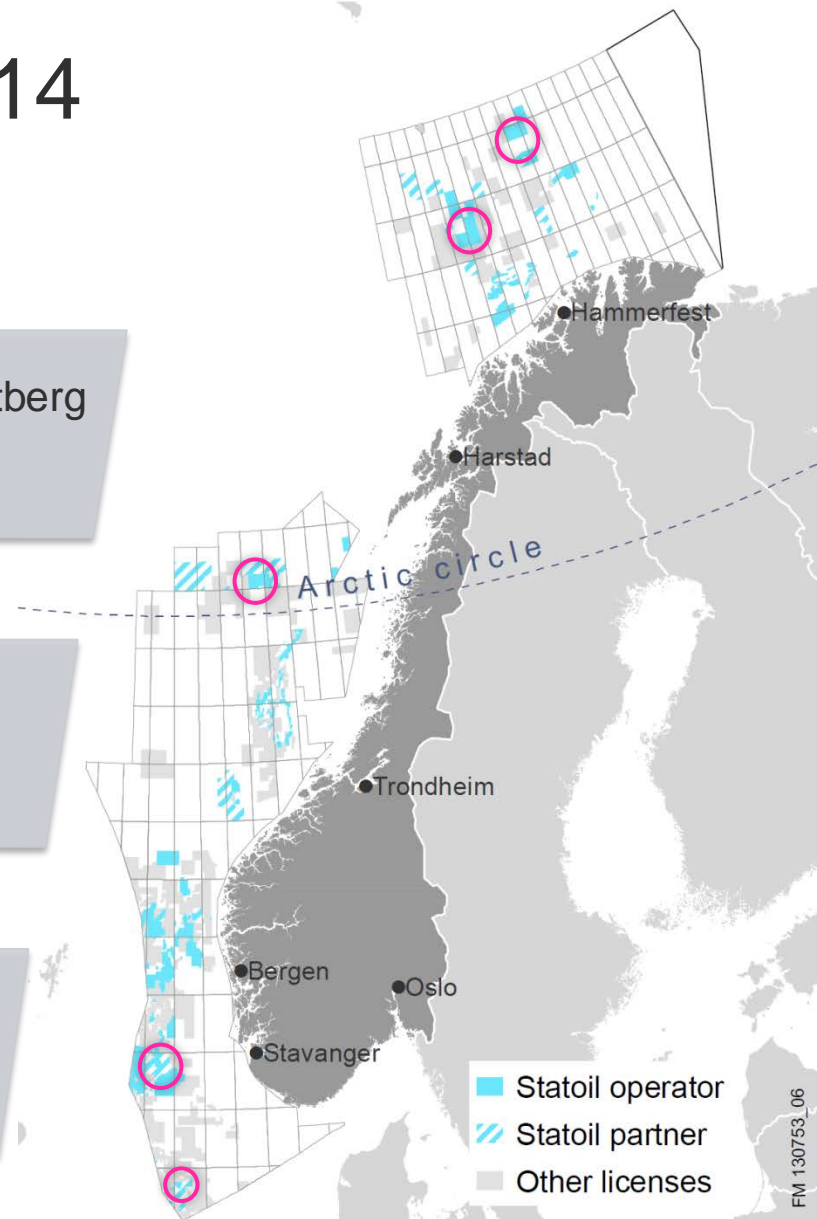
- Continue exploration around Johan Castberg
- Exploration drilling in the Hoop area

## Norwegian Sea

- Prepare 2015 deepwater exploration campaign in the Aasta Hansteen area

## North Sea

- Mature new opportunities in Utsira High
- Further explore the King Lear area

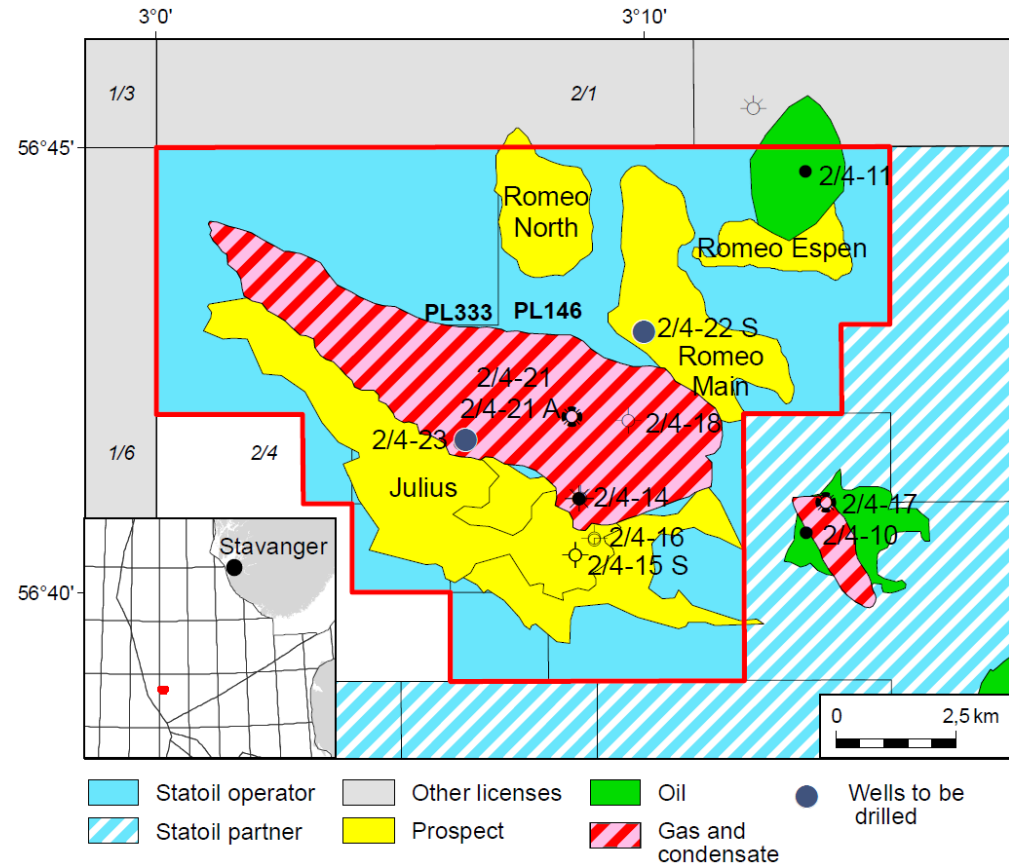




# Further explore the King Lear area

Building on 2012 discovery

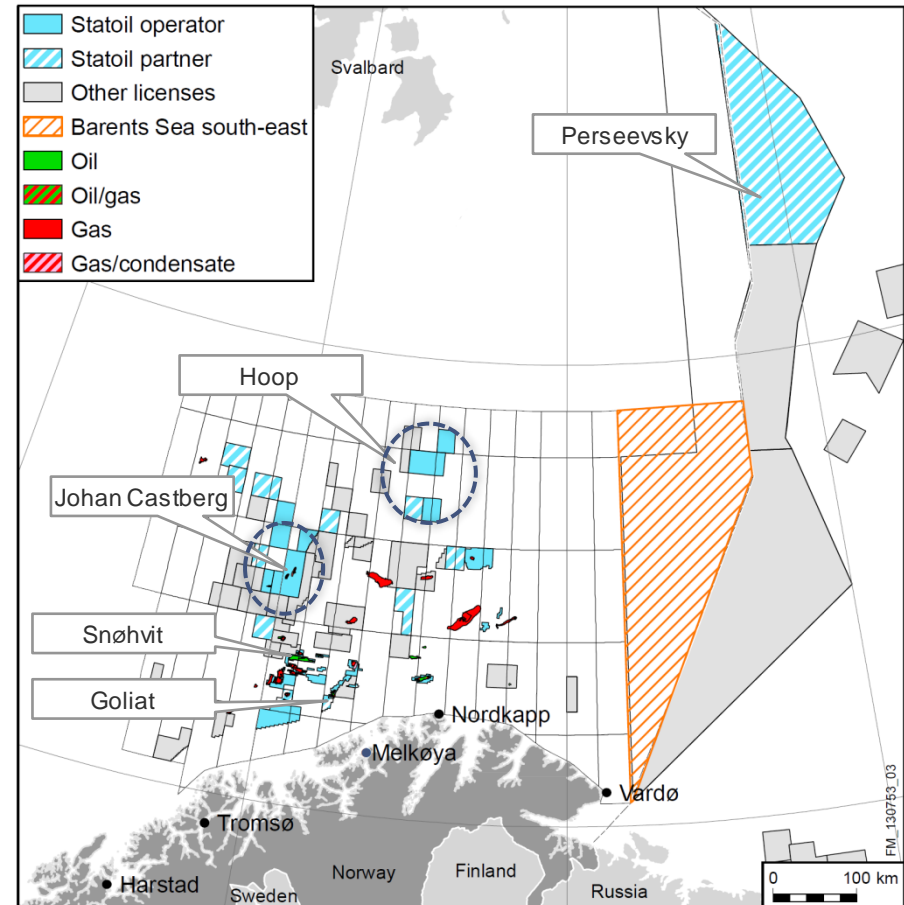
- King Lear - significant gas/condensate discovery in 2012
- Two wells planned in 2014/2015: Romeo and Julius
- High pressure high temperature area - high HSE focus
- Drilling rig scheduled: Maersk Gallant



# Barents Sea – exploration “hot spot”

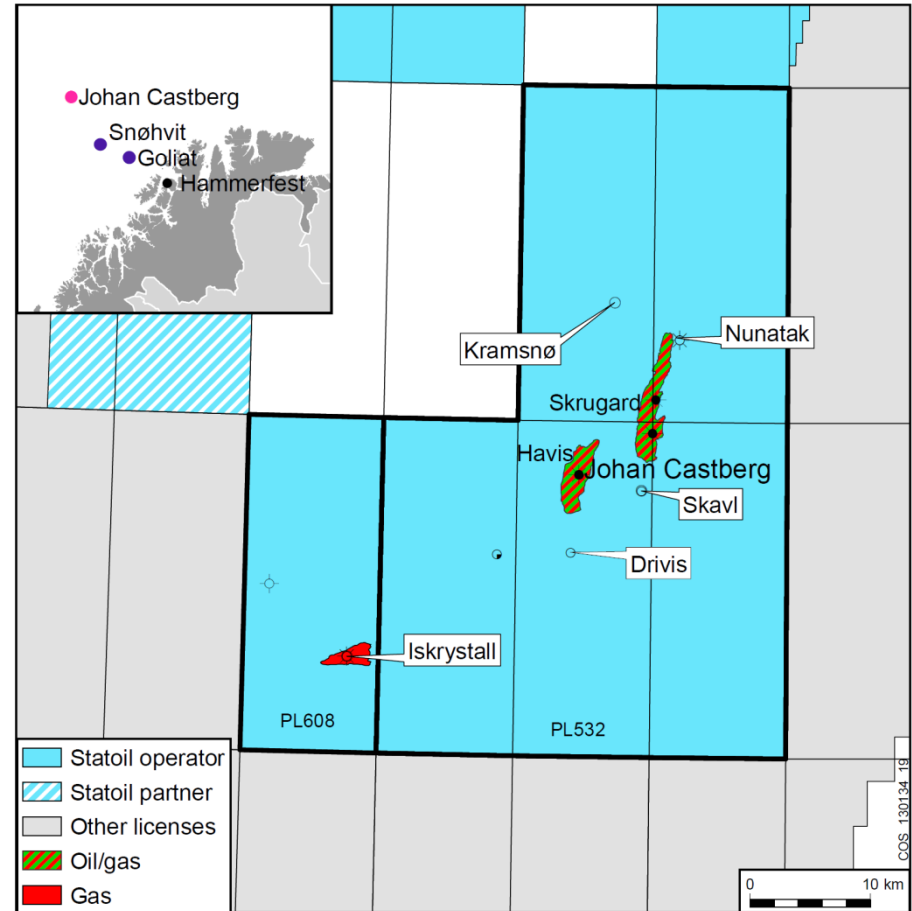
## Continue exploration campaign

- Several new oil plays opened 2011-2013
- 5-7 wells planned in 2014
- Main focus on the Johan Castberg and Hoop areas
- Active preparations for the 23<sup>rd</sup> Concession Round
- Barents Sea south east opened for petroleum activity



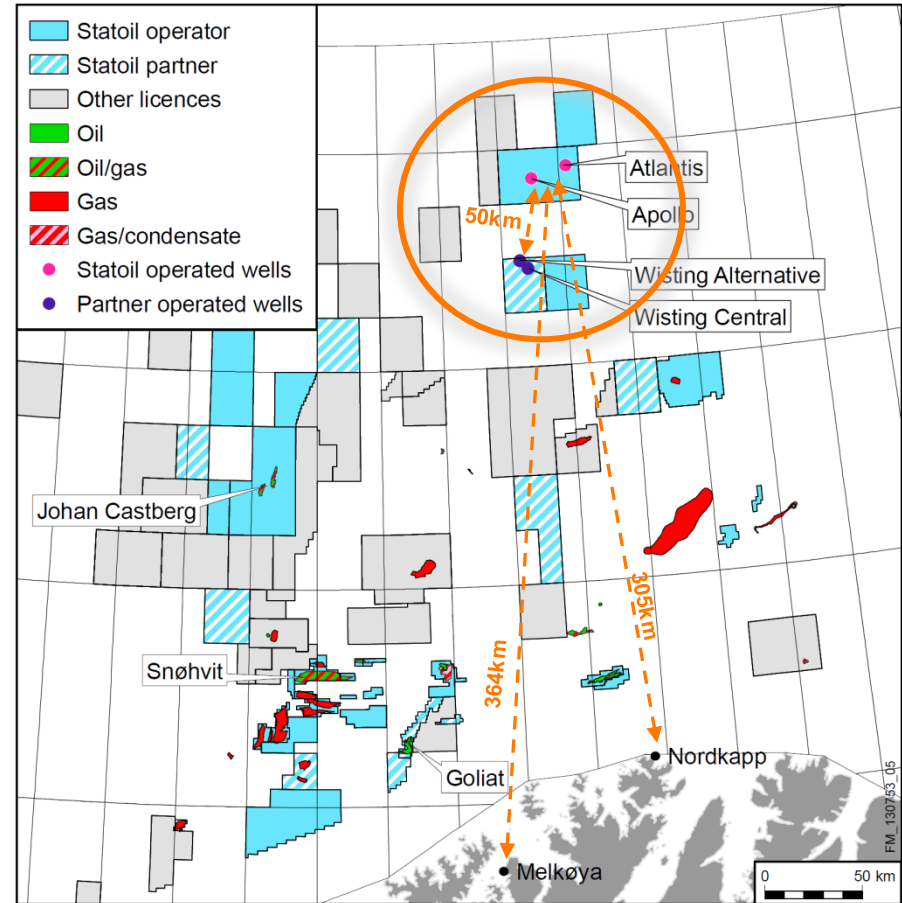
# Continued exploration effort in the Johan Castberg area

- Explore for additional oil resources to make the development project more robust
- 4 wells in 2013
  - Gas discoveries in Nunatak and Iskrystall
  - Skavl ongoing
  - Kramsnø next
- Exploration effort continues in 2014
  - Drivis – new prospect to be tested in the Johan Castberg area



# Hoop exploration drilling Q2-Q3 2014

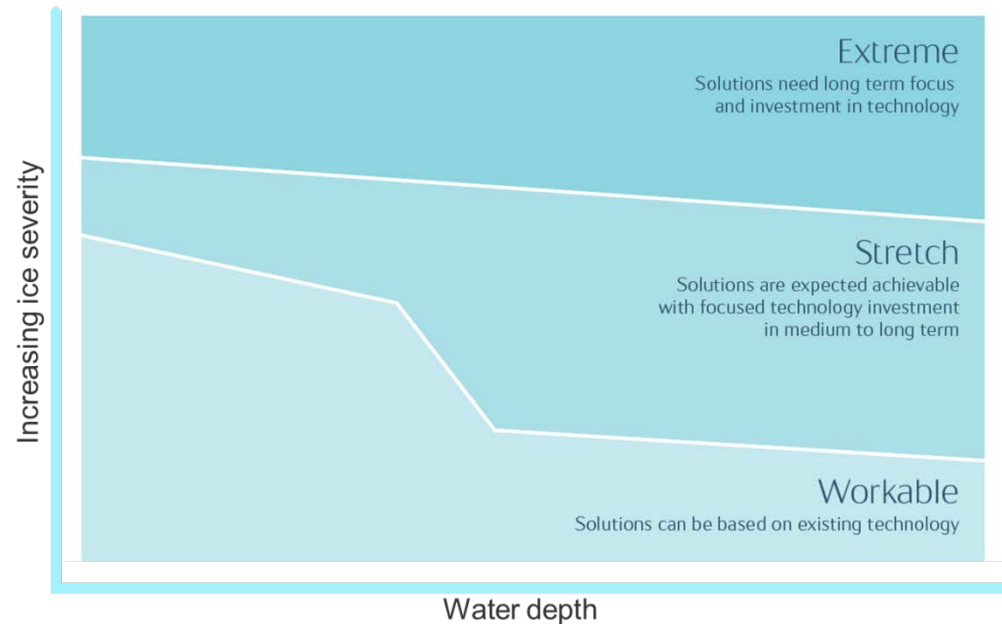
- Strong acreage position in the Hoop area
- Statoil – partner in the play opening Wisting Central discovery 2013
- 2-3 operated wells planned Q2-Q3 2014 in PL615, ~50 km north of Wisting
- Drilling rig scheduled: Ocean Vanguard





# There is not just one Arctic

- About 1/3 of the NCS acreage is above the Arctic Circle
- All licensed Barents Sea acreage is workable Arctic
- The industry can operate in the Hoop area year round based on available technology



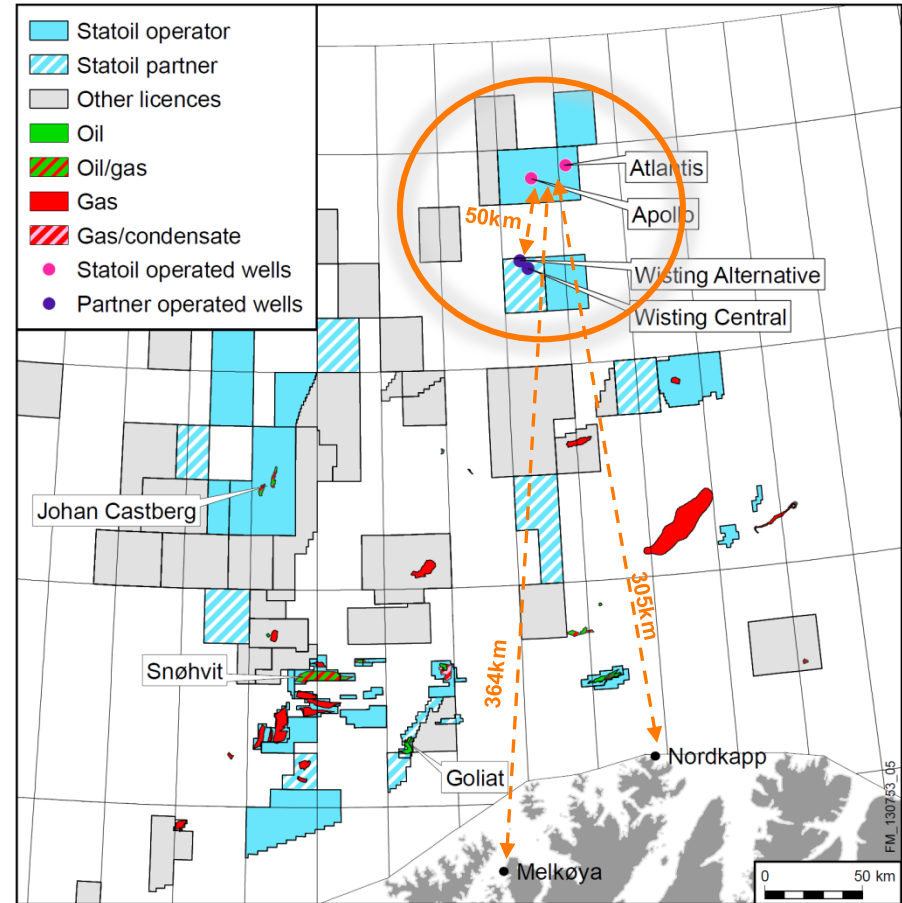


# Testing the potential in the Hoop area

Daniel Tuppen, Vice President,  
Exploration Barents Sea and Norwegian Sea

# Hoop is workable Arctic

- 33 years operational experience in the Barents Sea
- Solid subsurface understanding of the Hoop area
- Detailed environmental and climate studies
- Robust oil spill contingency plan
- Experienced drilling rig with high safety and performance record

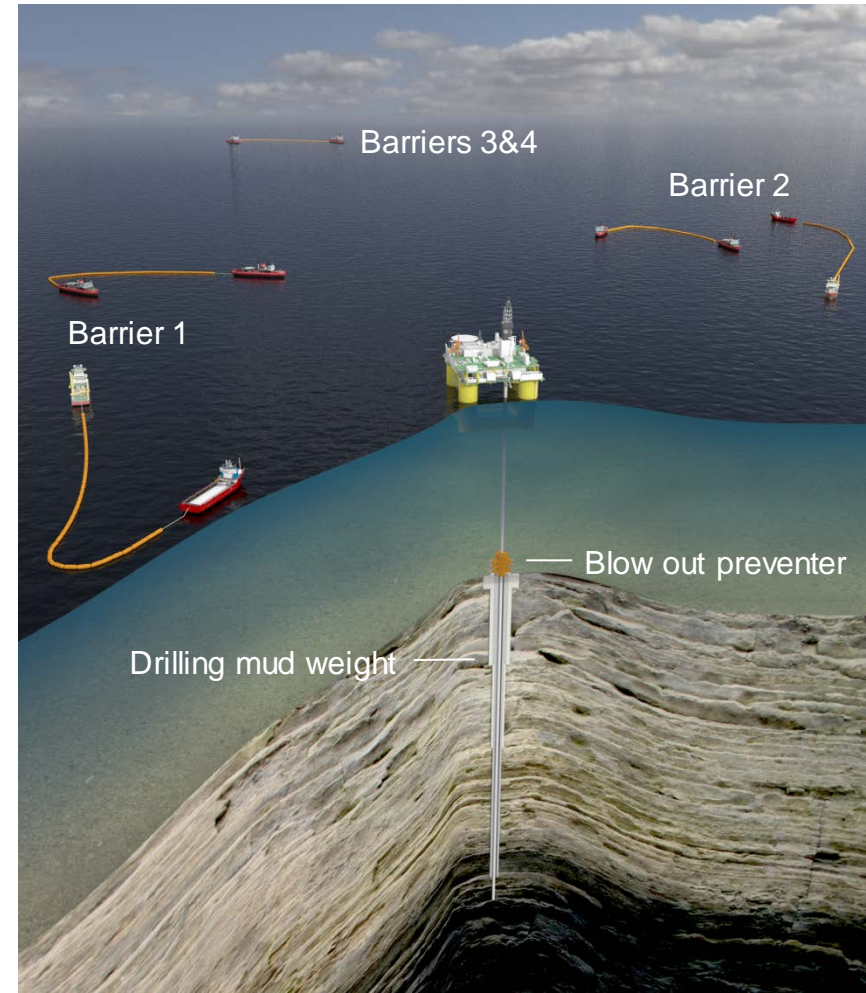
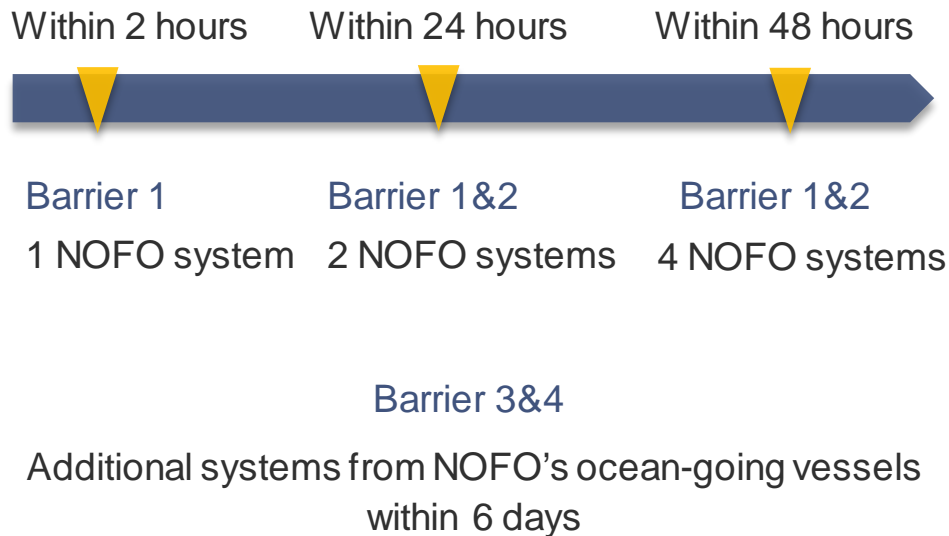


# The Hoop wells: Atlantis and Apollo

## Robust oil spill contingency

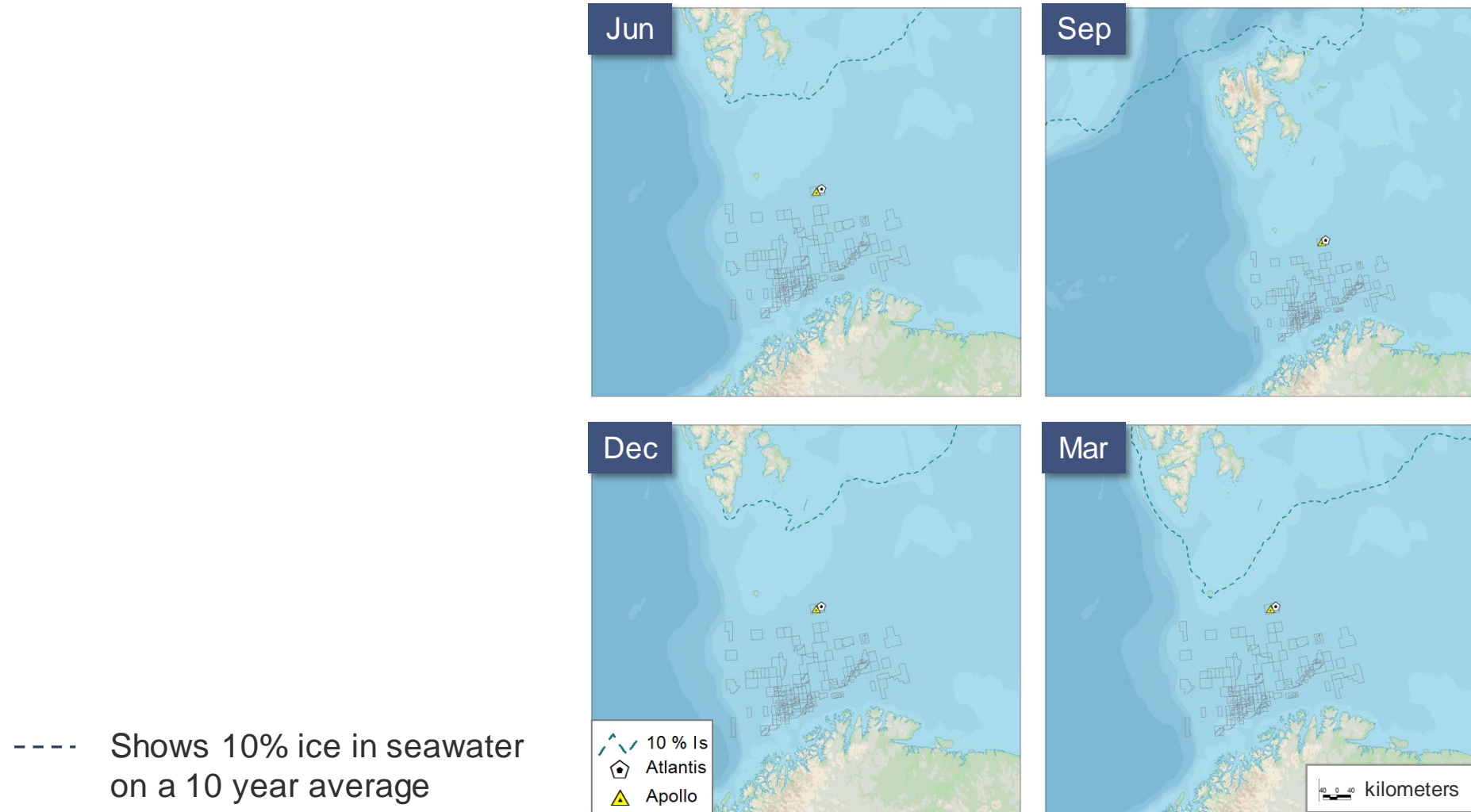
Barriers in the well to prevent oil spill

Barriers to recover spilled oil - NOFO systems





# Ice monitoring in the Hoop area



\* Maps produced by Akvaplan-niva, aggregated information from various sources



The Hoop wells: Atlantis and Apollo

# Standard wells at a longer distance from land

Standard exploration wells similar to previous operations in the Barents Sea

Low pressure and  
low temperature wells

Normal water depth

Environment & climate conditions  
similar to earlier operations

Longer distance from land compensated by

Extra measures  
helicopter transport



Extra measures  
medical assistance

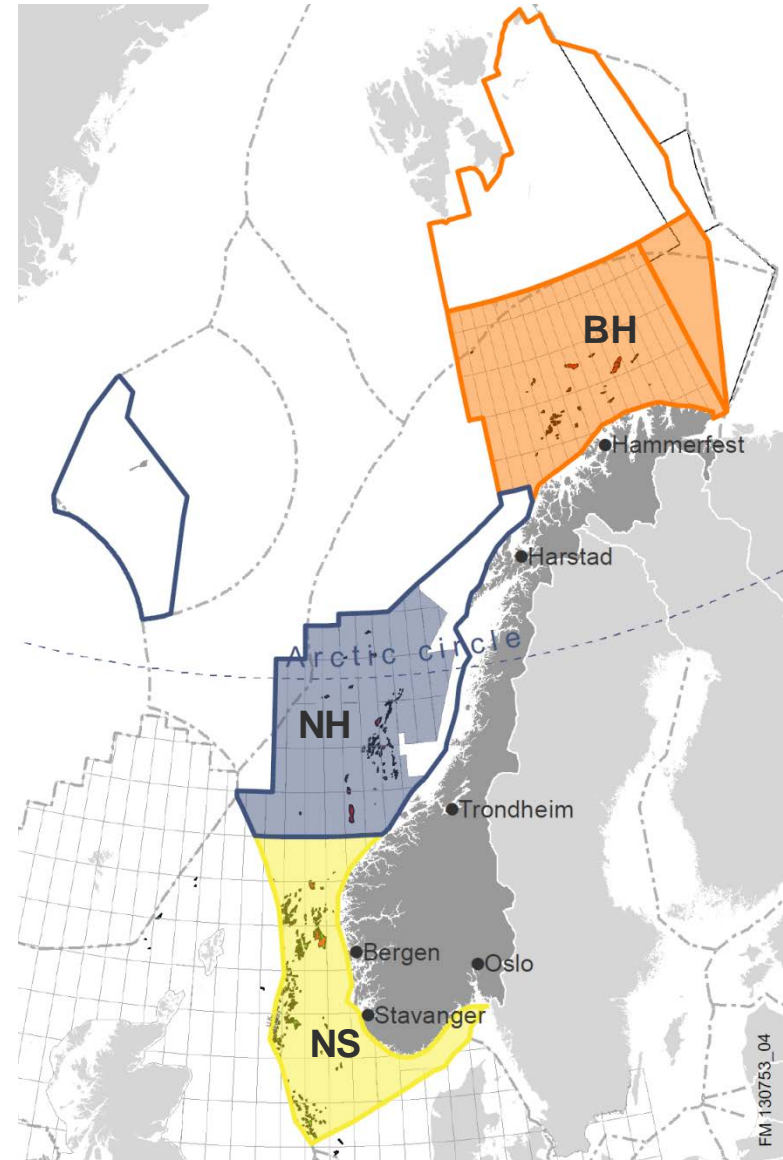
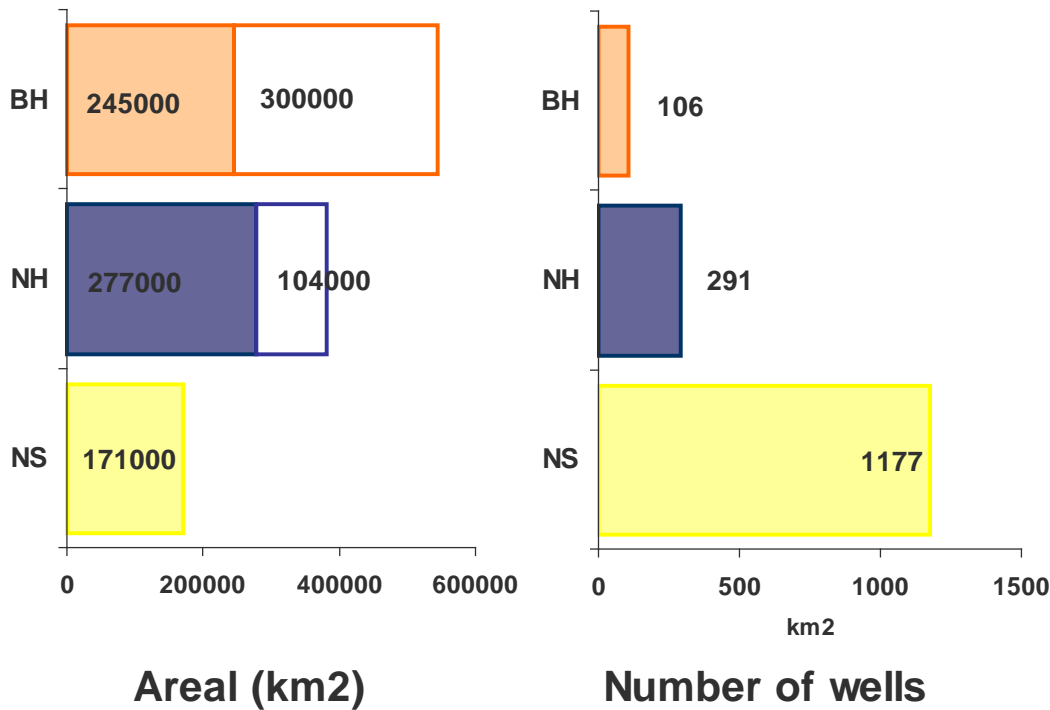


Advanced stand-by vessels



# Barents Sea vs. Norwegian/North Sea

## Huge area with few wells\*



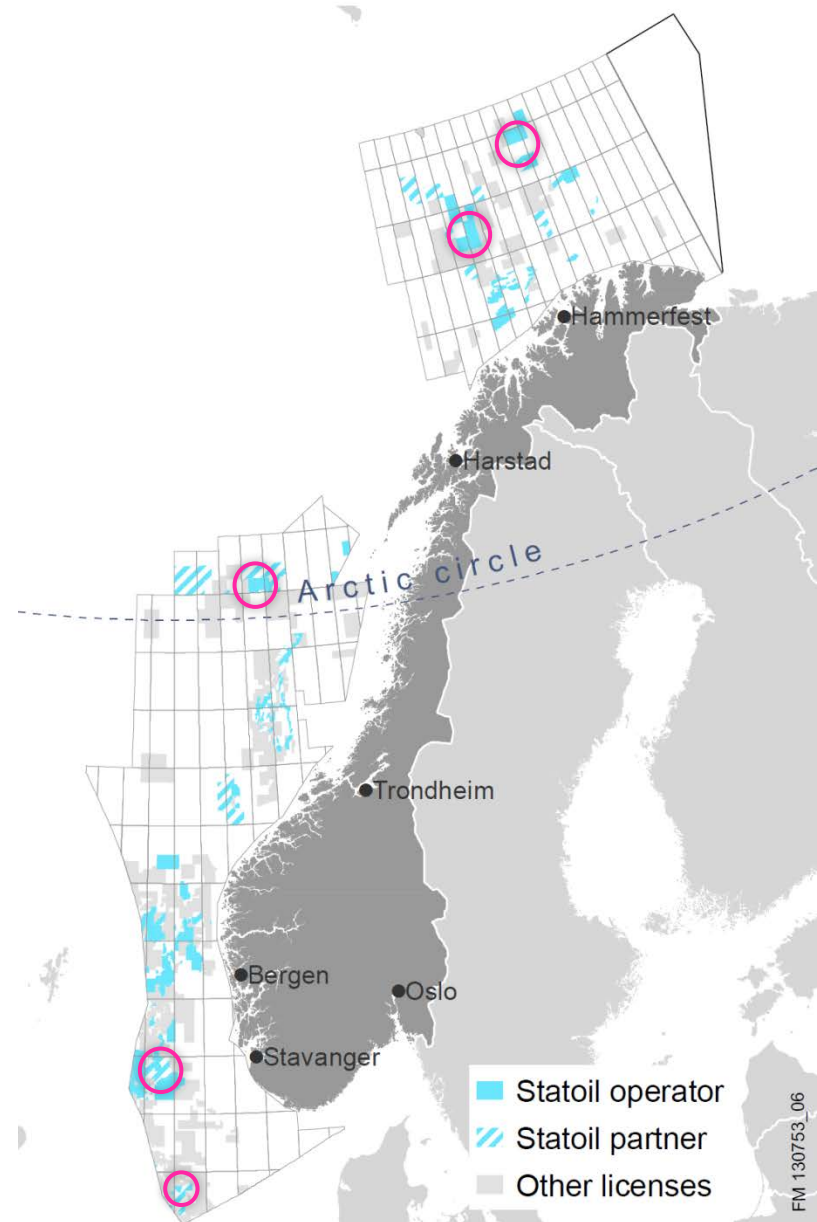
\* Data from Norwegian Petroleum Directorate





# Main takeaways

- Exciting 2014 exploration program on the NCS
- Highlights:
  - King Lear area
  - Greater Utsira High
  - Johan Castberg area
  - Hoop
- Barents Sea – the exploration hot spot





There's never been a better  
time for **good ideas**

Exciting exploration plans NCS 2014

Gro G. Haatvedt,  
SVP Exploration Norway

Daniel Tuppen  
VP Exploration Barents & Norwegian Sea

[www.statoil.com](http://www.statoil.com)

