



SITE PLAN
1:2000

STATOIL WEST PHASE 1

| | | |
|--------------------|------------------|----------|
| New building 1: | 61 406 GFA | 3 500 ws |
| Technical Bldg: | 1 200 GFA | |
| Existing building: | appr. 40 000 GFA | 1 000 ws |

Bicycle parking: 350 indoors 1 050 under roof.
Car parking: 500 staff spaces indoors
50 guest spaces on ground
staff parking on ground.

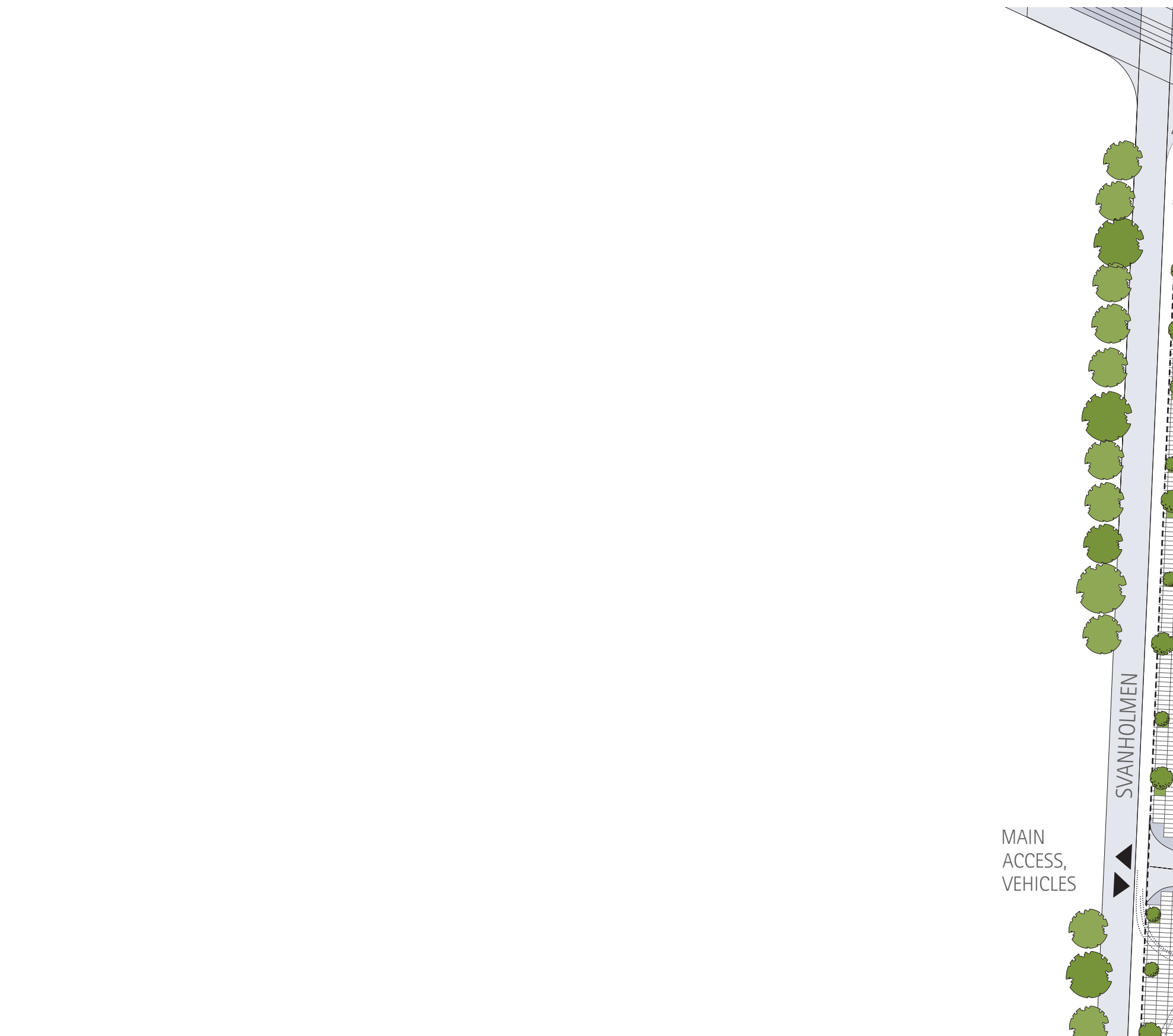


SITE PLAN
1:2000

STATOIL WEST INTERMEDIATE PHASE

| | | |
|--------------------|------------------|----------------------|
| New building 1: | 61 406 GFA | 3 500 ws |
| New building 2: | 35 200 GFA | 1 950 ws (18 sqm/ws) |
| Existing building: | appr. 40 000 GFA | 1 000 ws |

Bicycle parking: 350 in new garage
+350 indoors since earlier phase
1050 under roof since earlier phase
500 in new garage
+500 staff spaces since earlier phase
50+50 guest spaces on ground
additional staff parking on ground.



SITE PLAN
1:1000

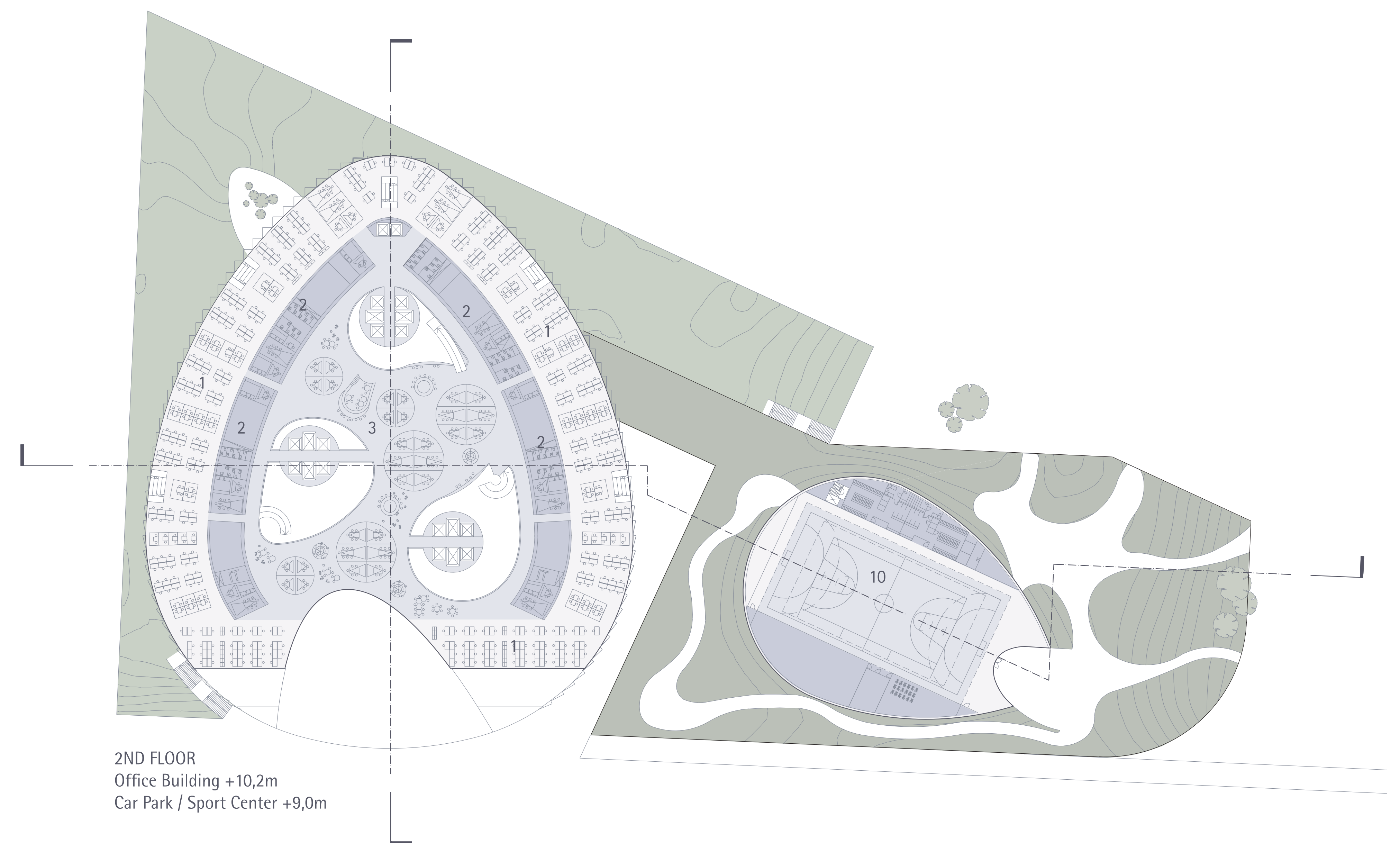
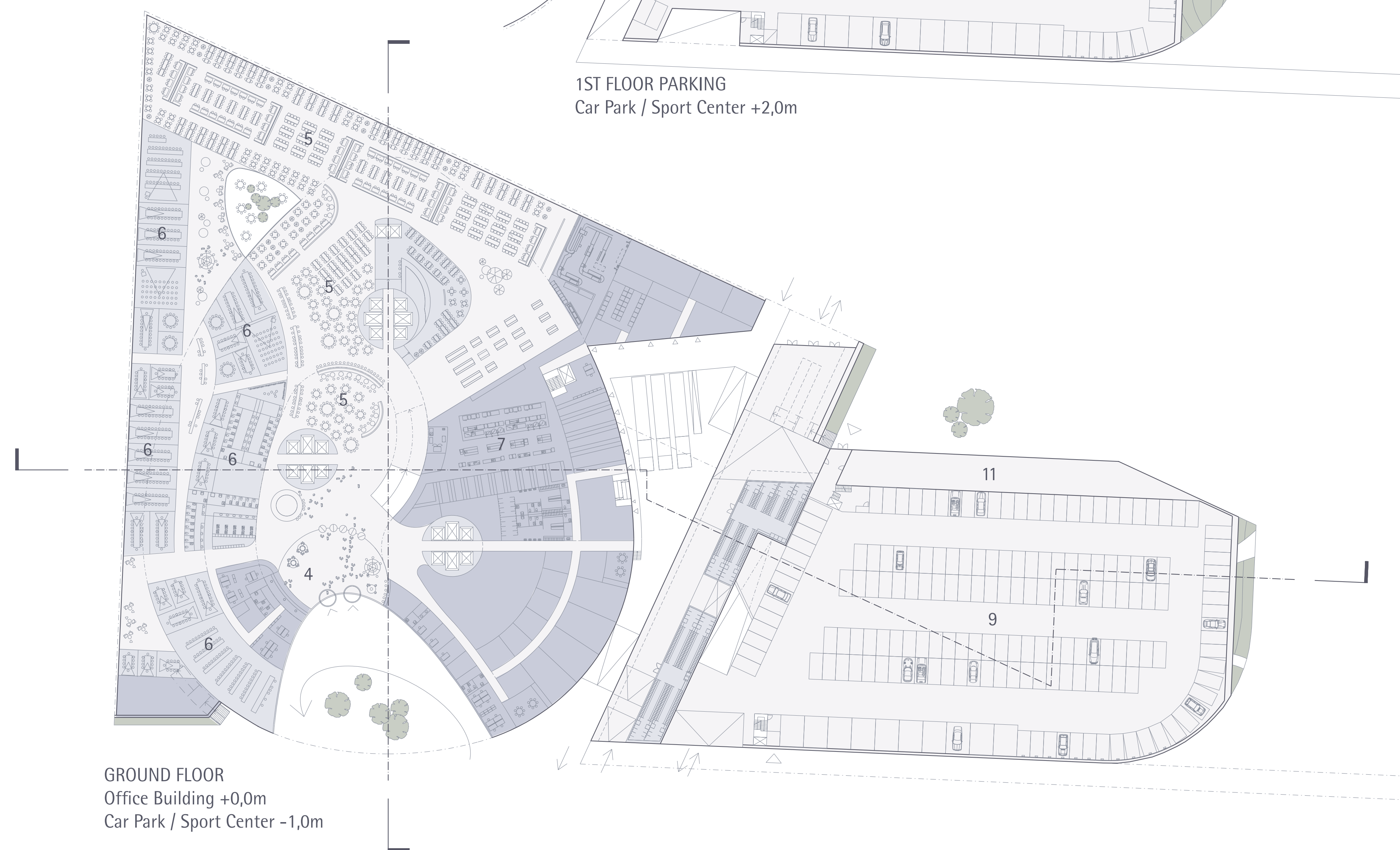
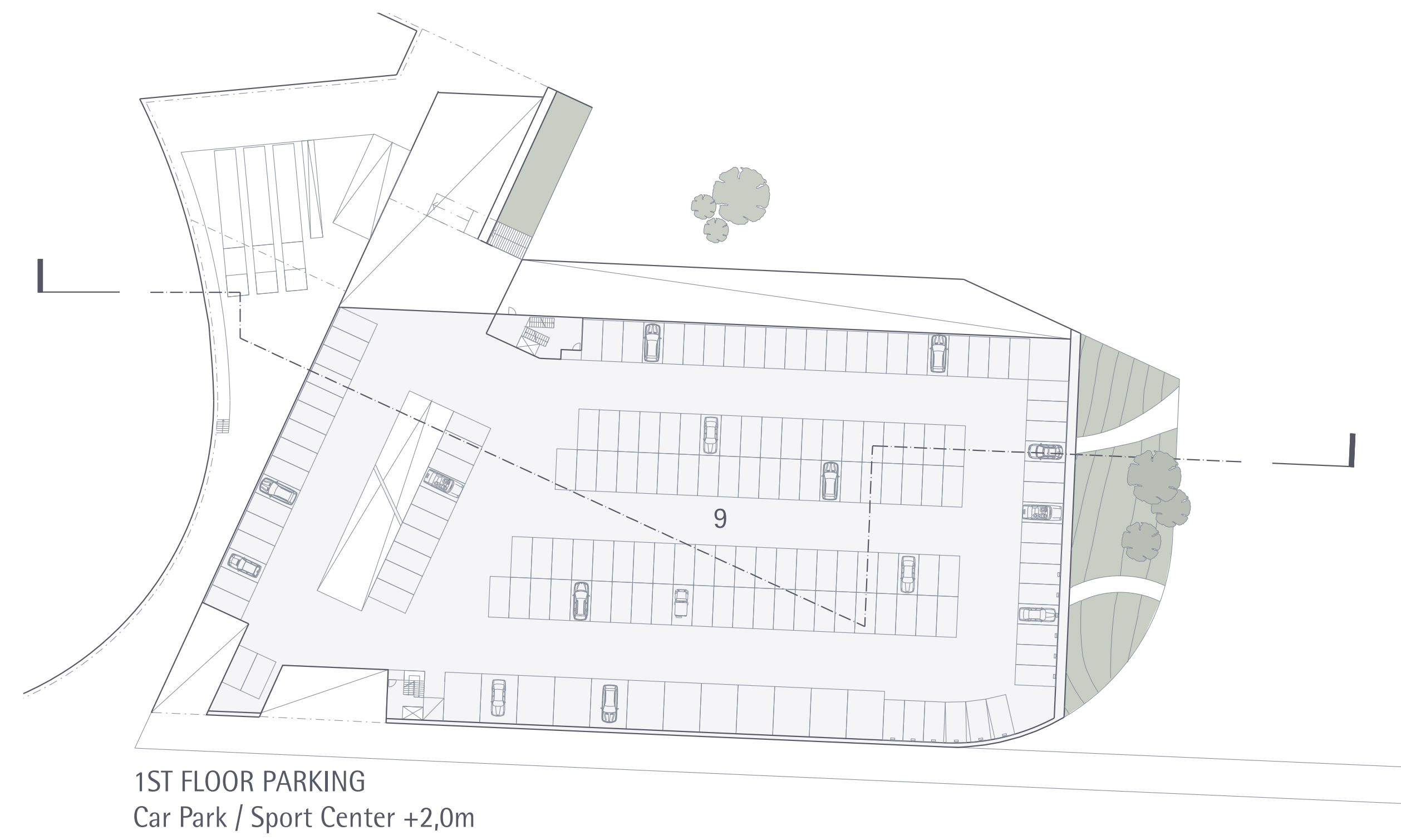
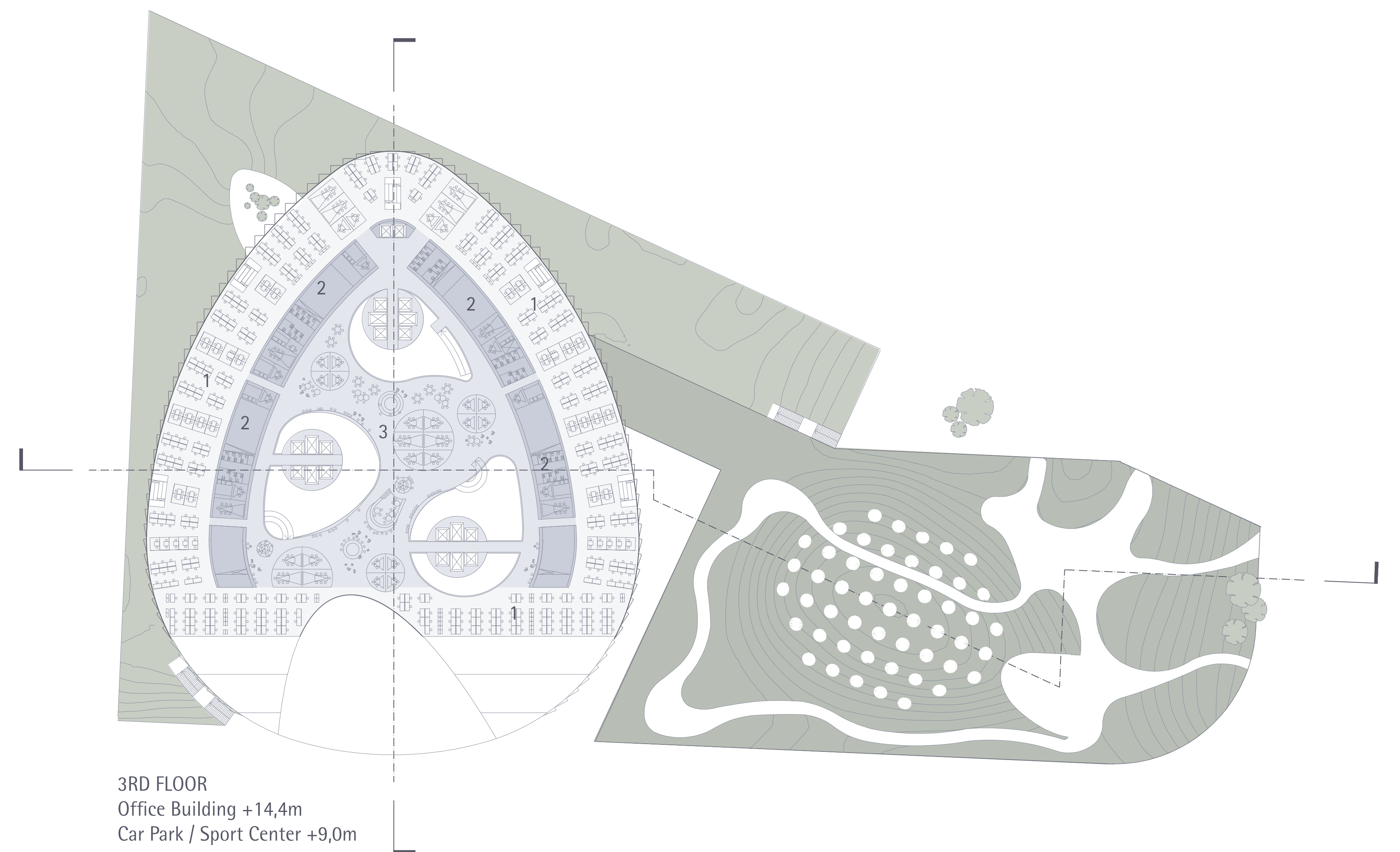
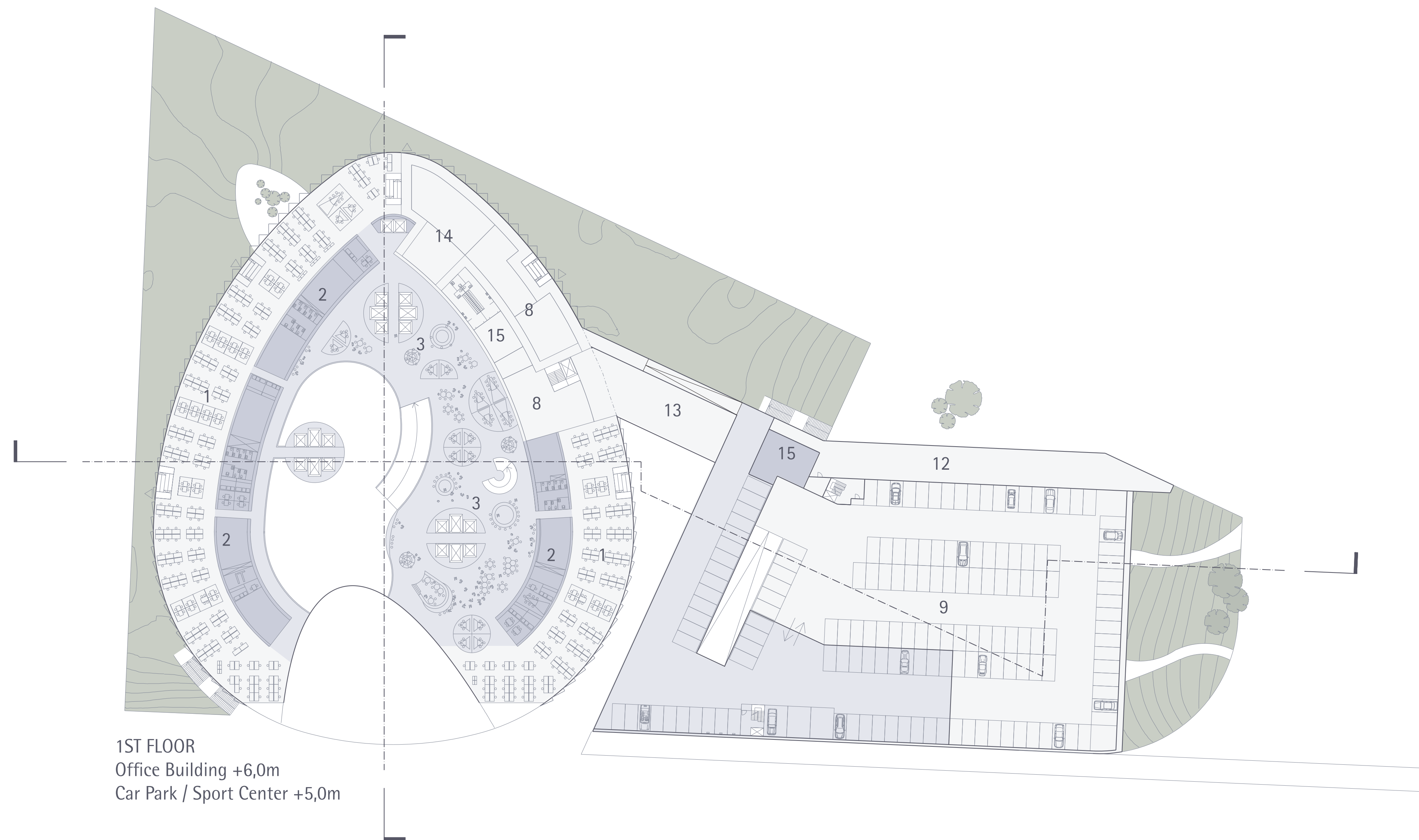
STATOIL WEST FINAL PHASE

| | | |
|-----------------|------------|----------------------|
| New building 1: | 61 406 GFA | 3 500 ws |
| New building 2: | 37 900 GFA | 2 100 ws (18 sqm/ws) |
| New building 3: | 43 100 GFA | 2 400 ws (18 sqm/ws) |

(Inc New support link, assumed appr. 2 800 GFA)
Exp. Technical Bldg.
Bicycle parking: 350 +350 since earlier phase indoors
1 050 under roof since earlier phase
500+500 staff spaces indoors since earlier phase
50+50 +50 guest spaces on ground
additional staff parking on ground
(improved public transportation likely to allow
lower parking spaces / staff rates at this point)



SITE PLAN
1:1000



- LEGEND
- | | |
|-----------------|------------------------|
| 1. OFFICE ZONE | 9. PARKING |
| 2. SUPPORT ZONE | 10. SPORT CENTER |
| 3. SOCIAL ZONE | 11. COMMERCIAL PROGRAM |
| 4. RECEPTION | 12. KINDERGARTEN |
| 5. CAFETERIA | 13. STORAGE |
| 6. MEETING | 14. OPERATIONS |
| 7. KITCHEN | 15. VENTILATION |
| 8. IT | |

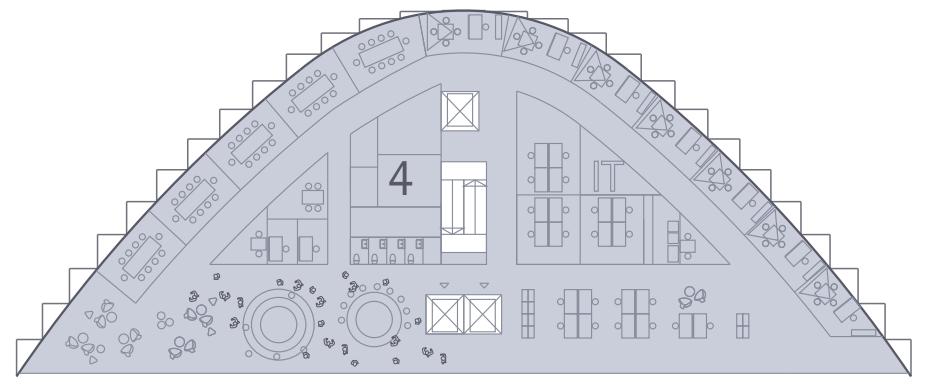




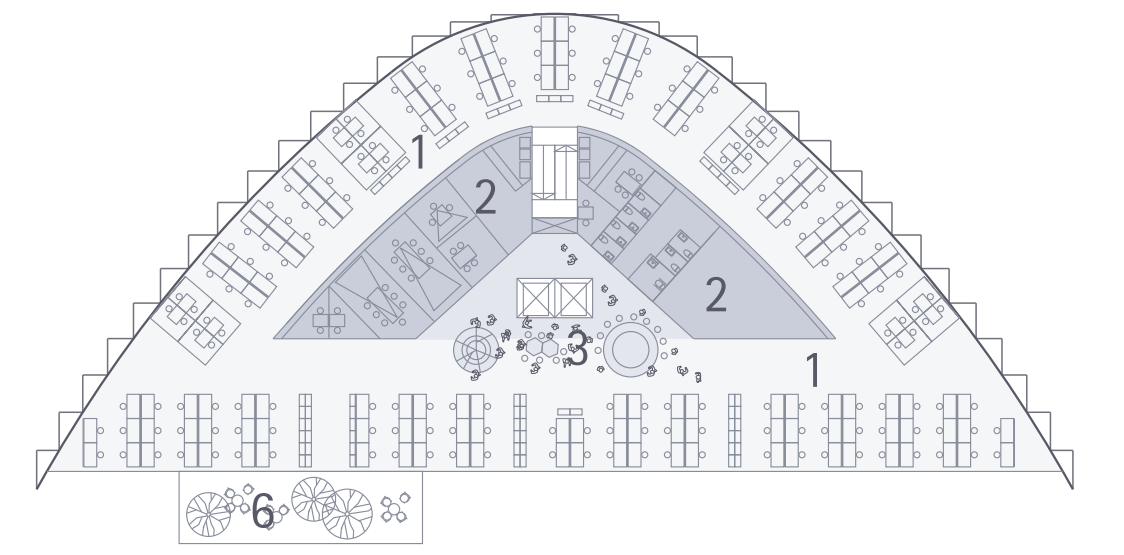
INTERIOR PERSPECTIVE - ATRIUM

15TH FLOOR
OPTIONAL GRAND MEZZANINE
+64,8m

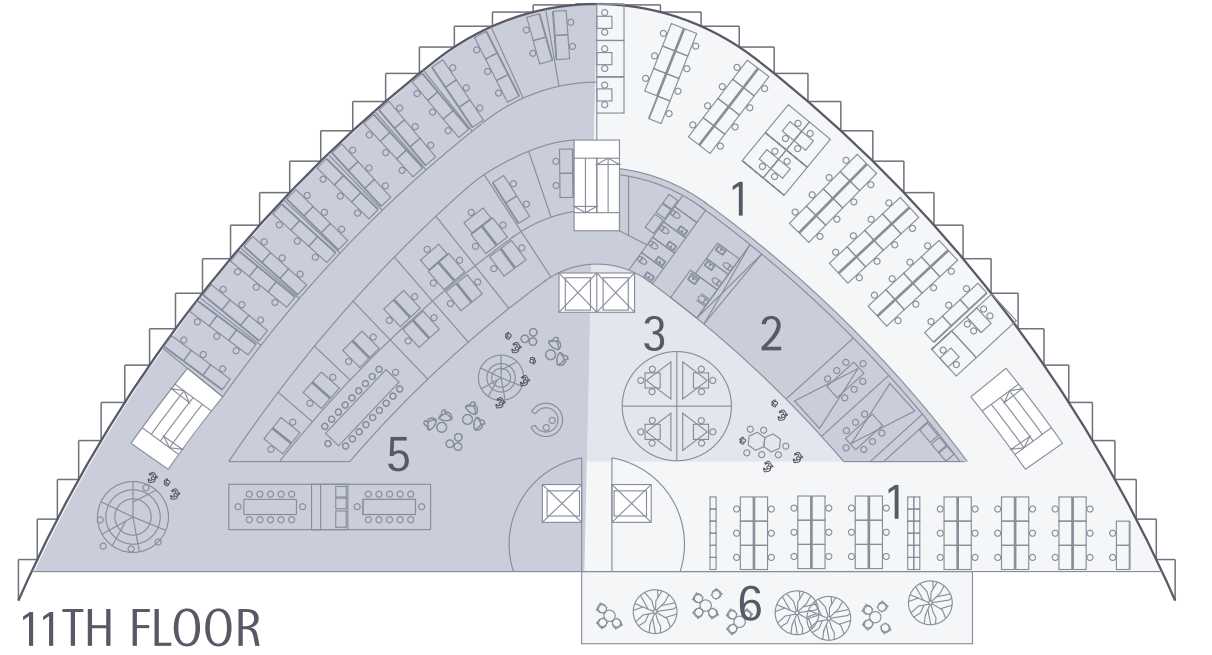
14TH FLOOR
+60,6m



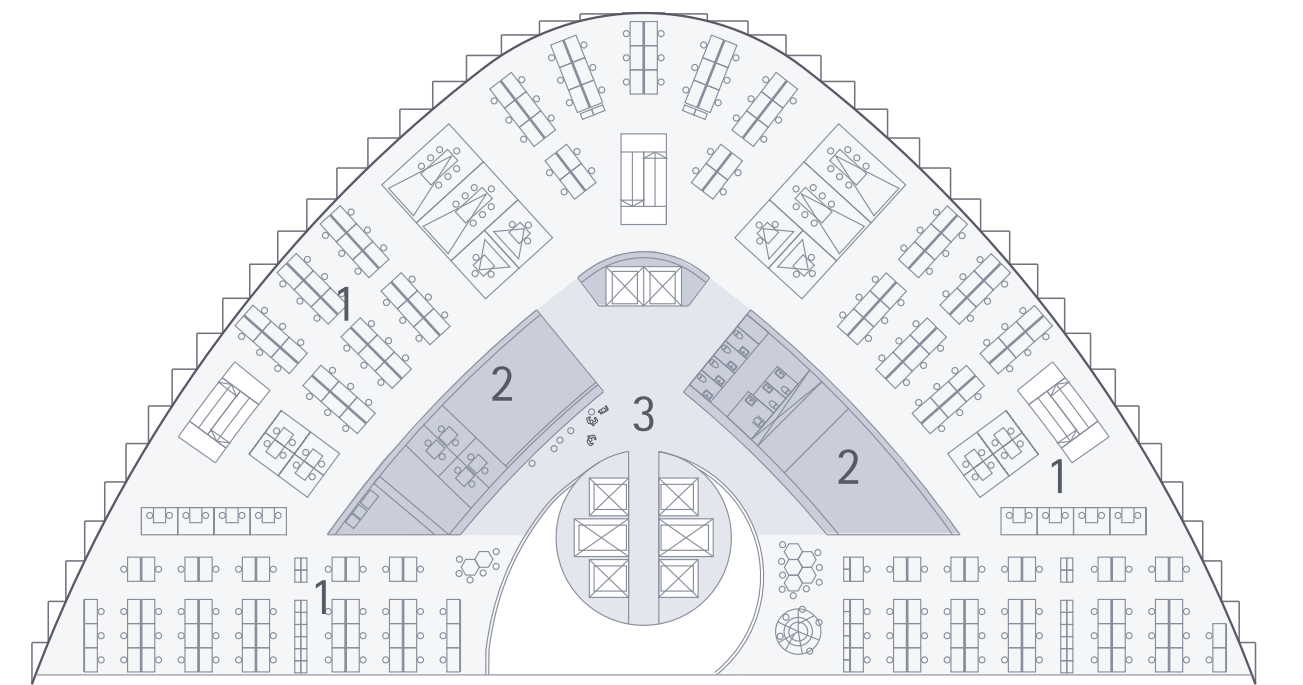
13TH FLOOR
+56,4m



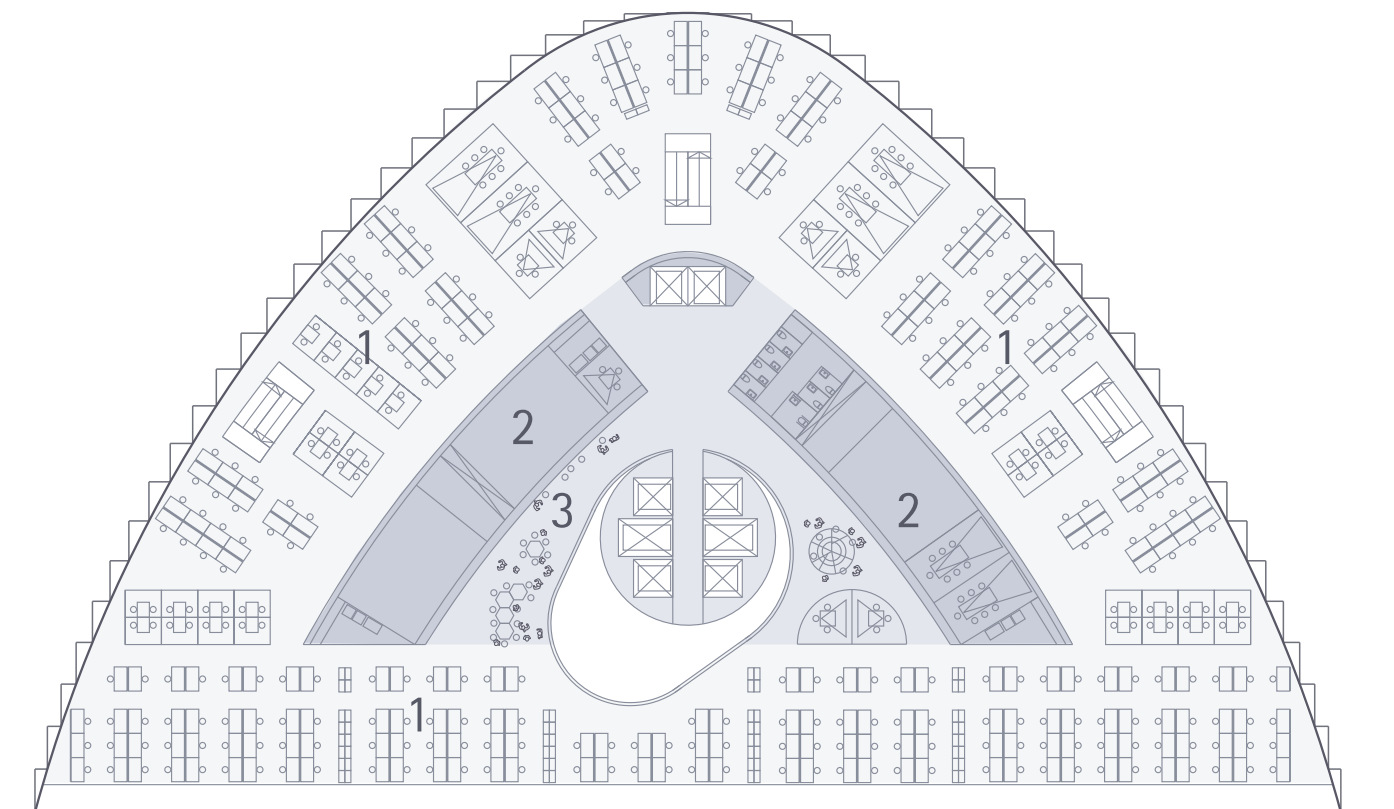
12TH FLOOR
+52,2m



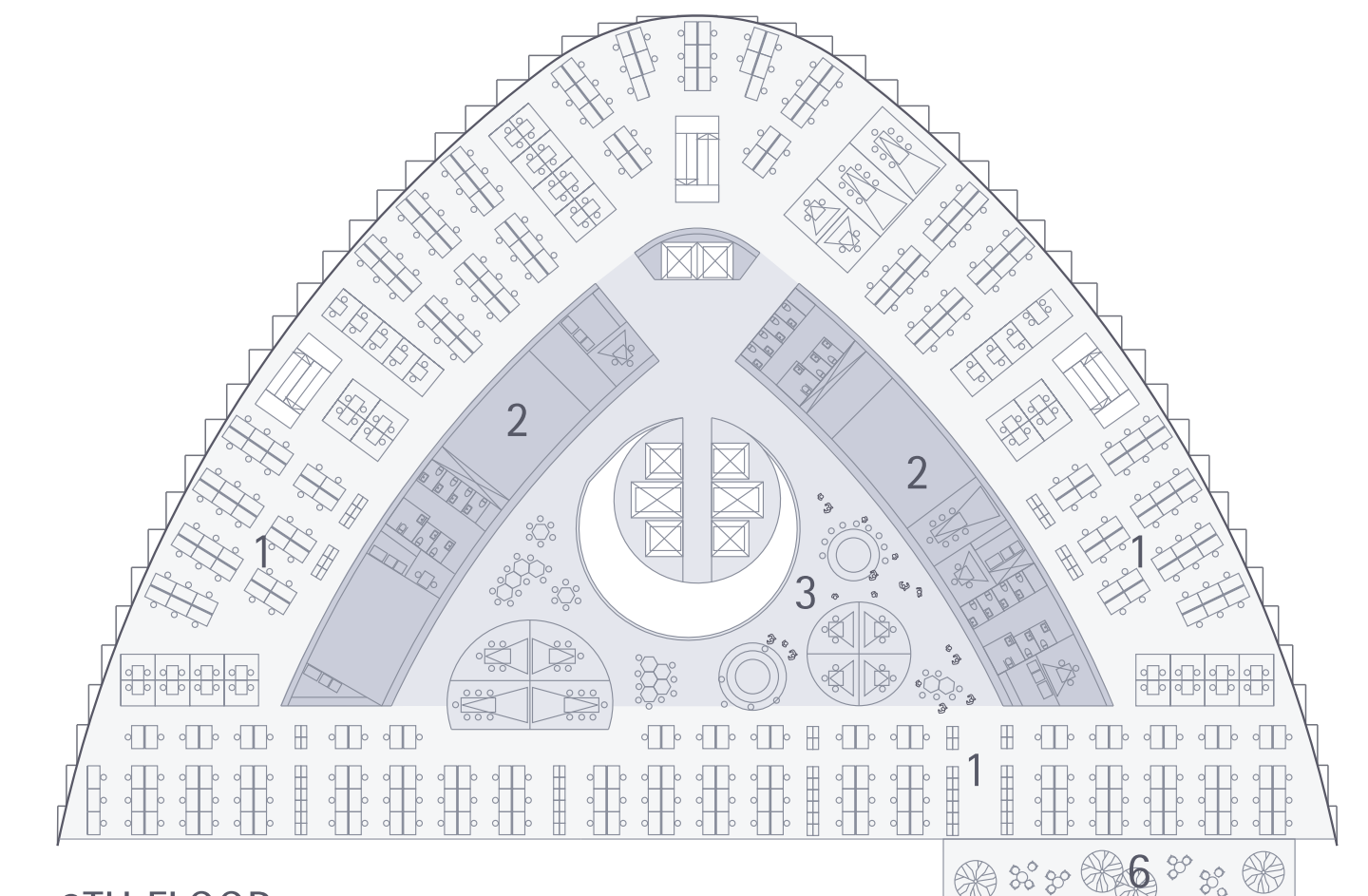
11TH FLOOR
+48,0m



10TH FLOOR
+43,8m

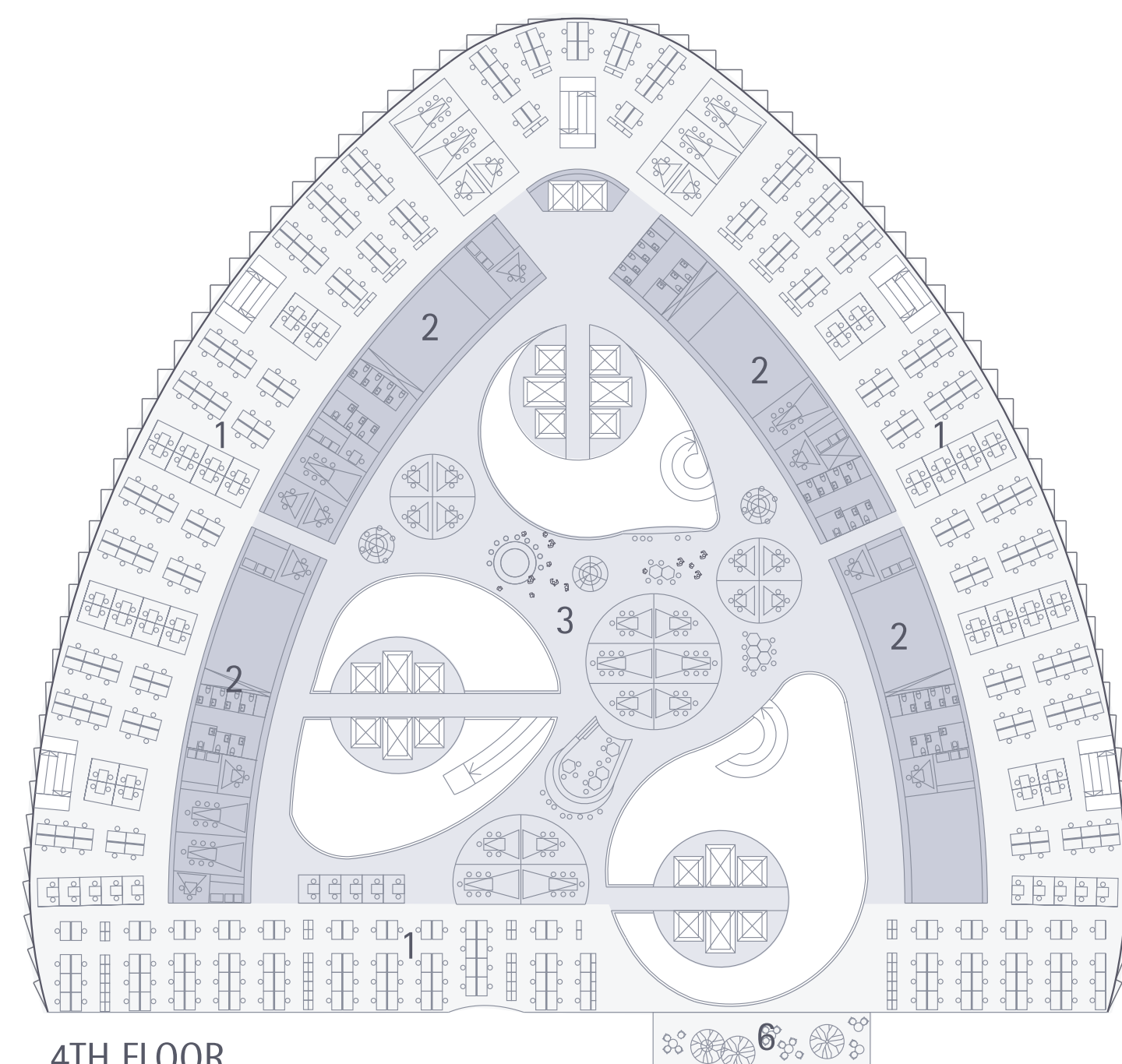


9TH FLOOR
+39,6m

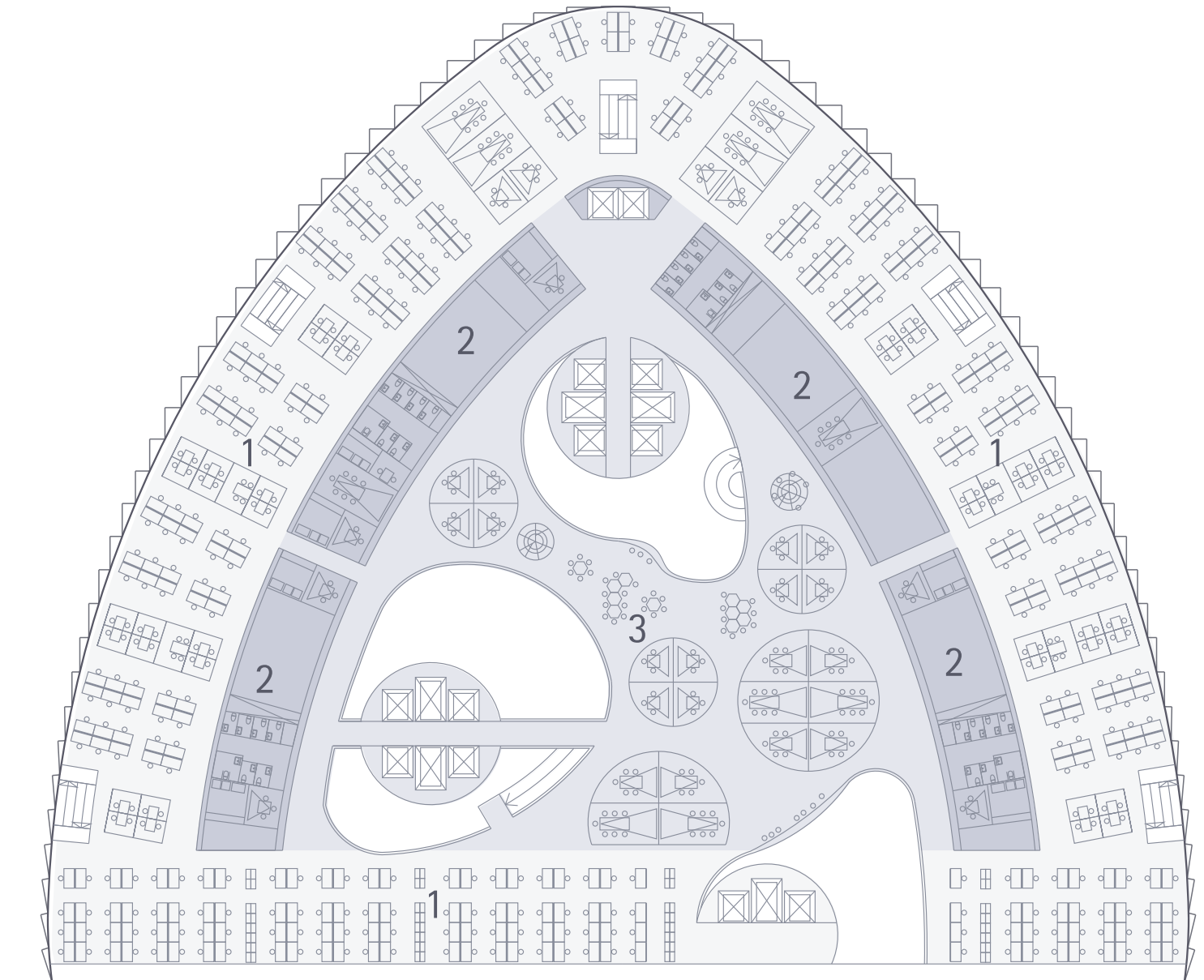


8TH FLOOR
+35,4m

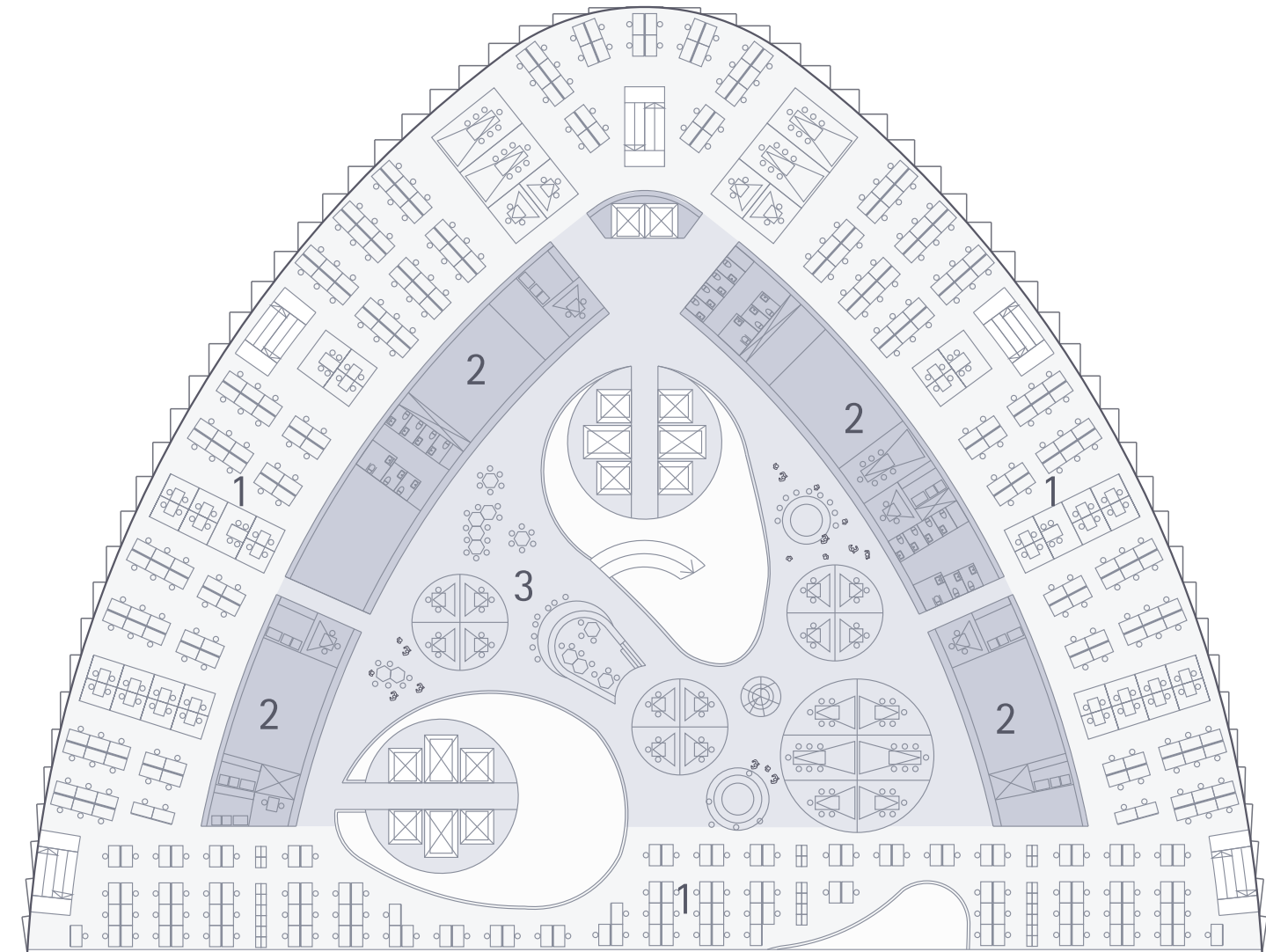
- LEGEND
- 1. OFFICE ZONE
 - 2. SUPPORT ZONE
 - 3. SOCIAL ZONE
 - 4. EXECUTIVE OFFICE
 - 5. EVALUATION AREA
 - 6. TERRACE



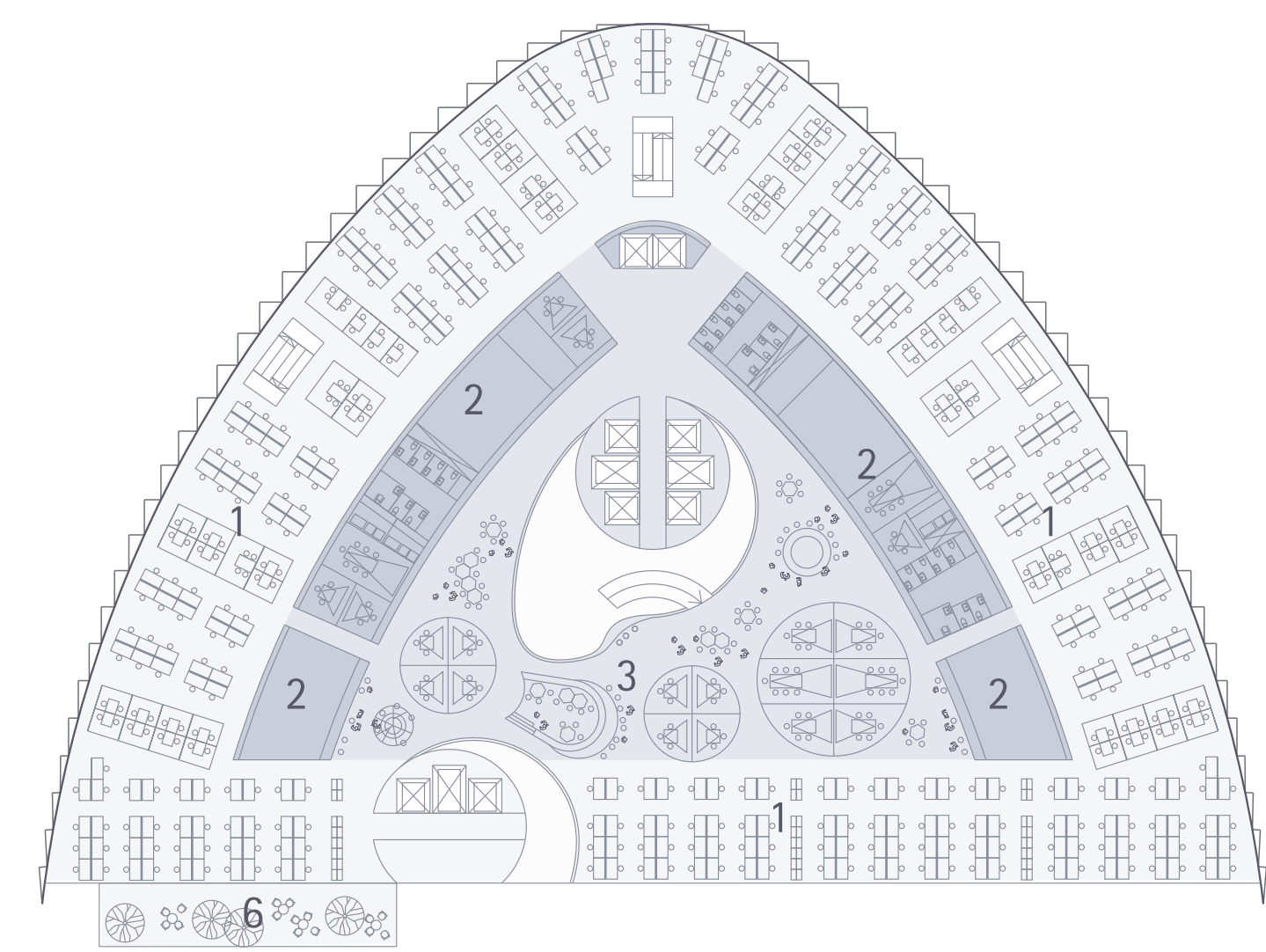
4TH FLOOR
+18,6m



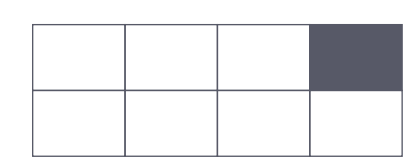
5TH FLOOR
+22,8m

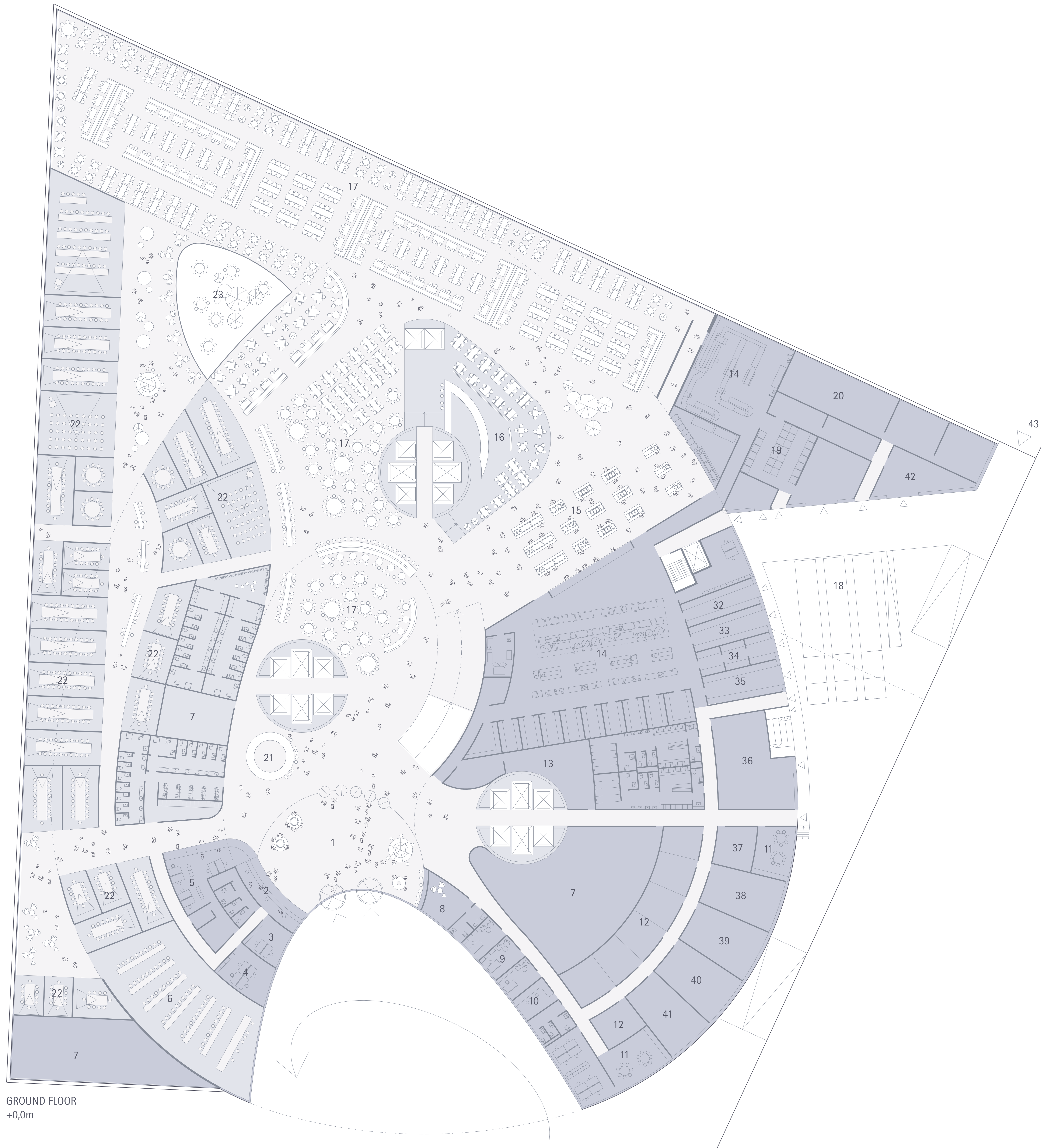


6TH FLOOR
+27,0m

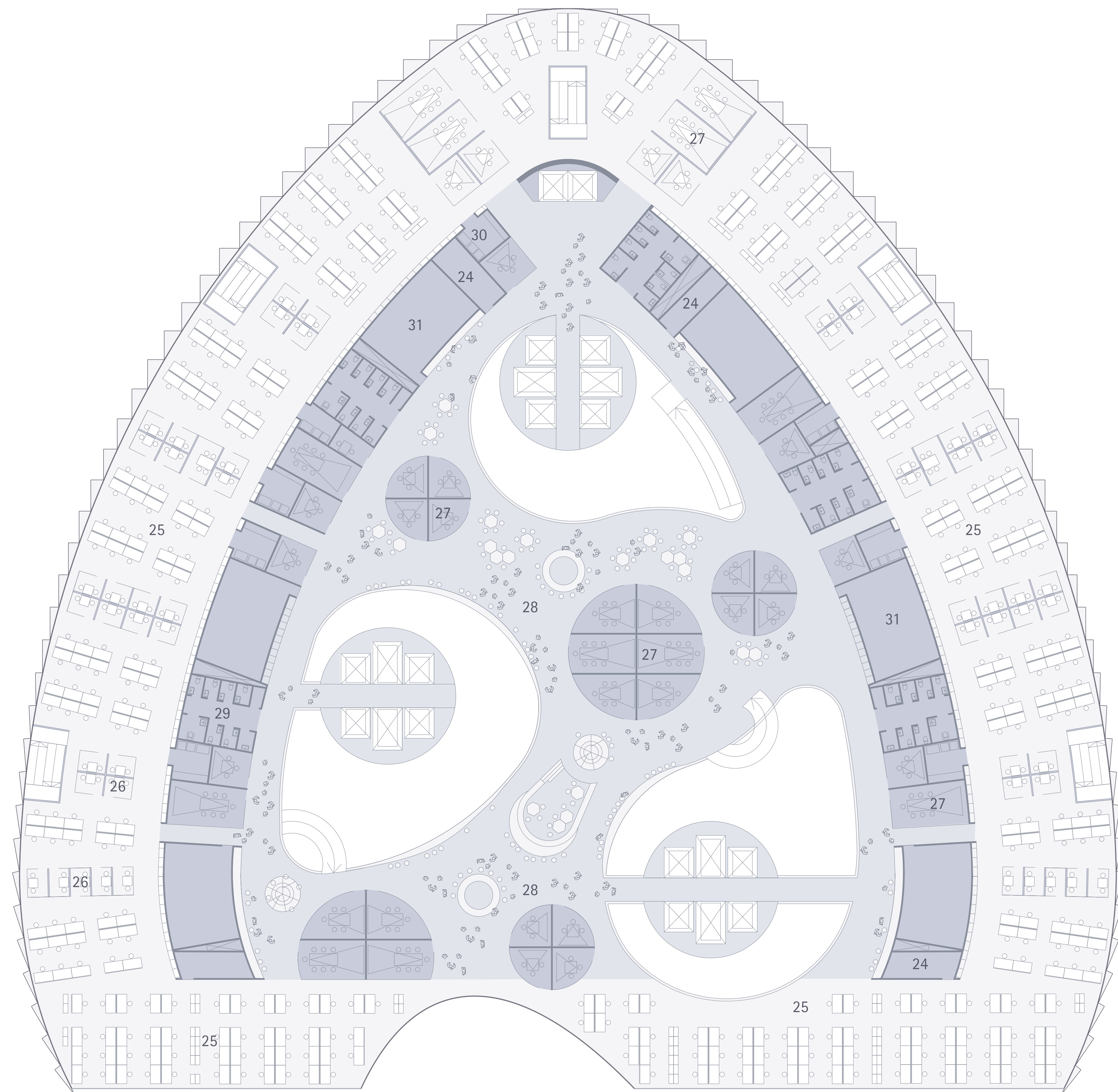


7TH FLOOR
+31,2m





GROUND FLOOR
+0,0m



FIRST FLOOR
+6,0m

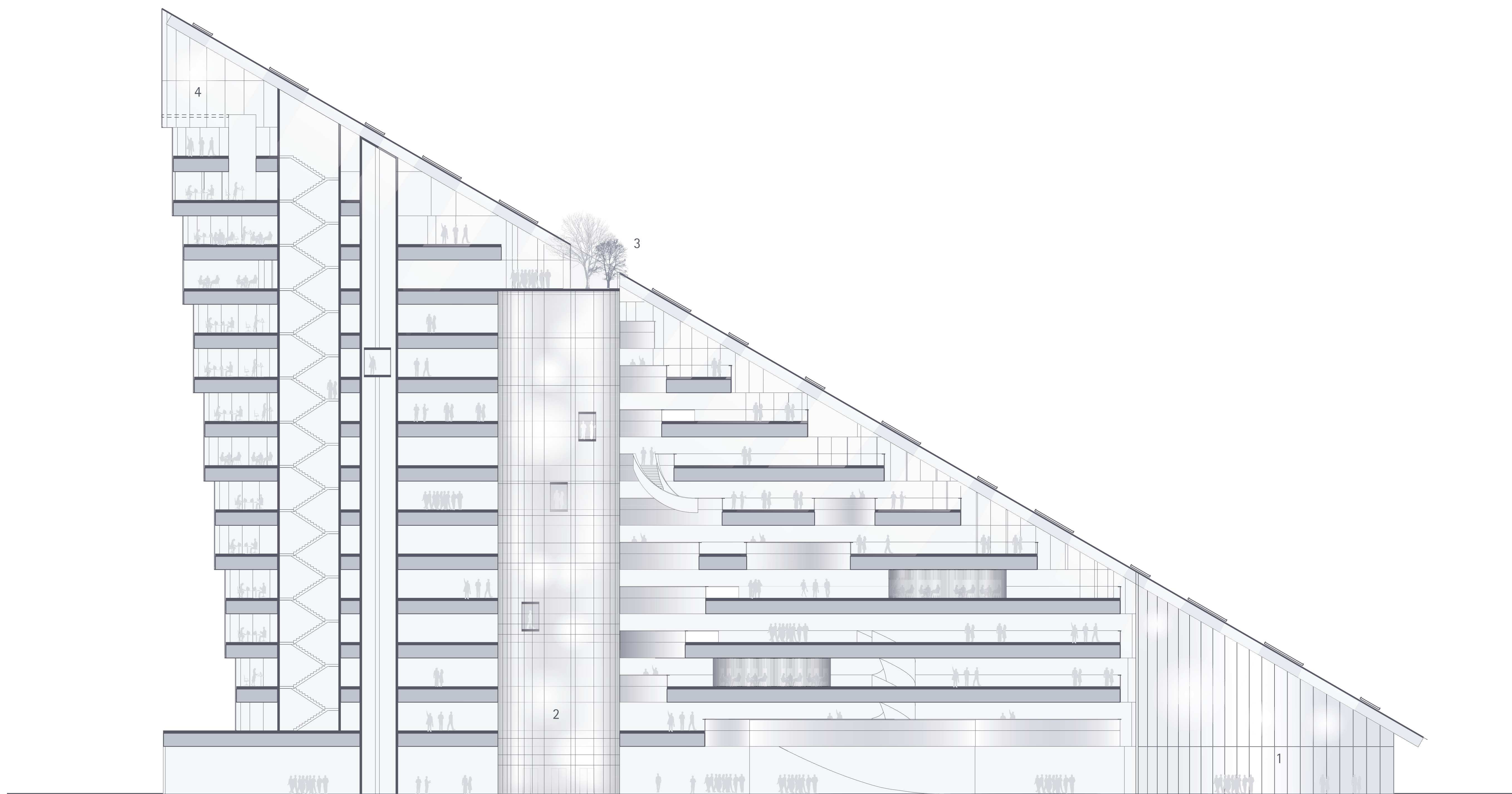
LEGEND

- | | | |
|-----------------------|--------------------------|----------------------------------|
| 1. VESTIBULE | 15. SERVING AREA | 30. COPY |
| 2. RECEPTION | 16. GUEST RESTAURANT | 31. VENTILATION |
| 3. BACK OFFICE | 17. CAFETERIA | 32. COLD STORAGE |
| 4. SECURITY & CONTROL | 18. GOODS RECEIPT AREA | 33. FRIDGE ROOM |
| 5. SERVICE CENTRE | 19. RECYCLING / WASTE | 34. VEGETABLE STORAGE |
| 6. PRESS ROOM | 20. POST / SUPPLIERS | 35. DRY STORAGE |
| 7. VENTILATION | 21. CAFÉ | 36. NON FOOD STORAGE |
| 8. REFLECTION ROOM | 22. CENTRAL MEETING ROOM | 37. STORAGE HATCH SHREDDING ROOM |
| 9. MEDICAL OFFICE | 23. OPEN AIR ATRIUM | 38. STORAGE HATCH FOR RETURN |
| 10. LAB | 24. IT ROOM | 39. STORAGE HATCH GENERAL GOODS |
| 11. STAFF ROOM | 25. OPEN OFFICE AREA | 40. STORAGE HATCH IT |
| 12. FURNITURE STORAGE | 26. FOCUS ROOM | 41. STORAGE HATCH GRAPHICS |
| 13. CLEANING | 27. LOCAL MEETING ROOM | 42. STORAGE HATCH SUPPLIES |
| 14. KITCHEN | 28. SOCIAL ZONE | 43. DELIVERY ACCESS, ONE-WAY |
| | 29. LAVATORY | |

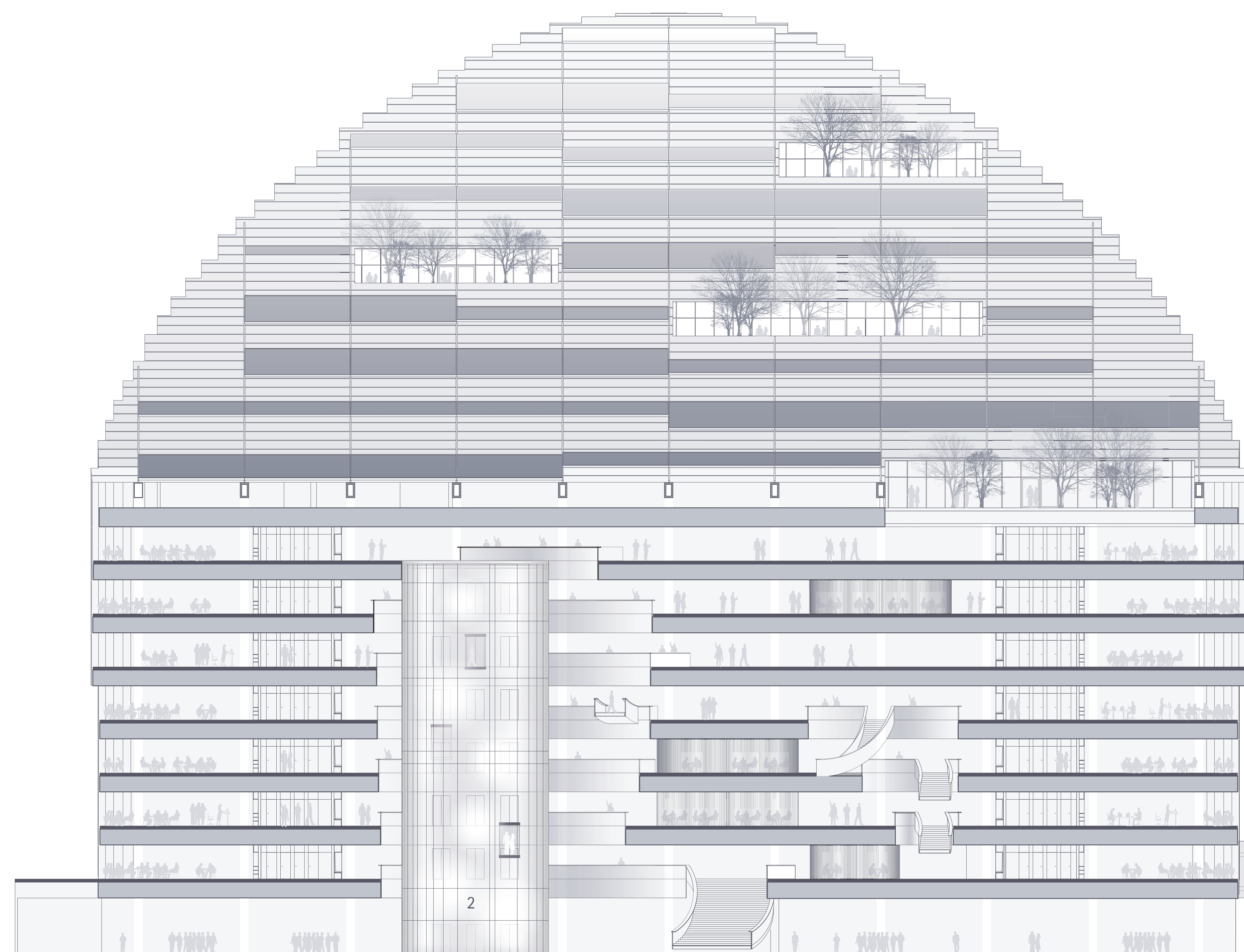


- LEGEND
- 1. DROP-OFF ZONE
 - 2. ELEVATORS
 - 3. TERRACE
 - 4. OPTIONAL GRAND MEZZANINE
 - 5. LOGISTICS
 - 6. INDOOR BICYCLE PARKING
 - 7. CAR PARKING
 - 8. SPORTS CENTER

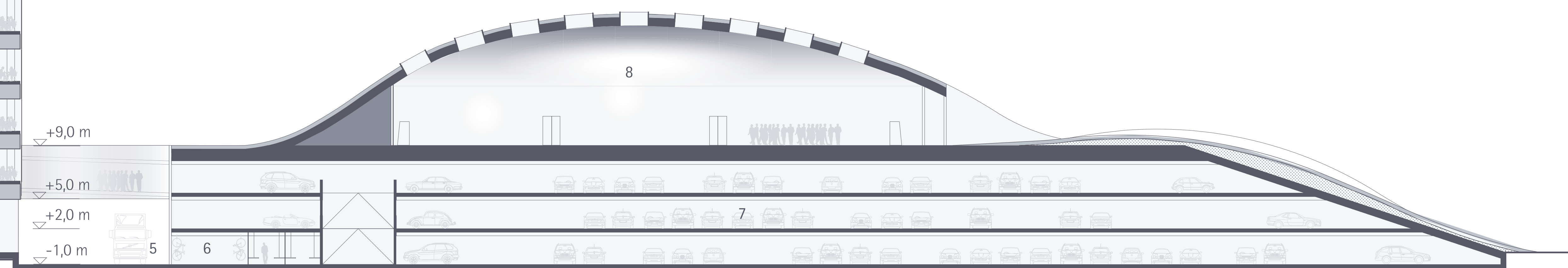
+74,6 m
 +64,8 m
 +60,6 m
 +56,4 m
 +52,2 m
 +48,0 m
 +43,8 m
 +39,6 m
 +35,4 m
 +31,2 m
 +27,0 m
 +22,8 m
 +18,6 m
 +14,4 m
 +10,2 m
 +6,0 m
 +0,0 m

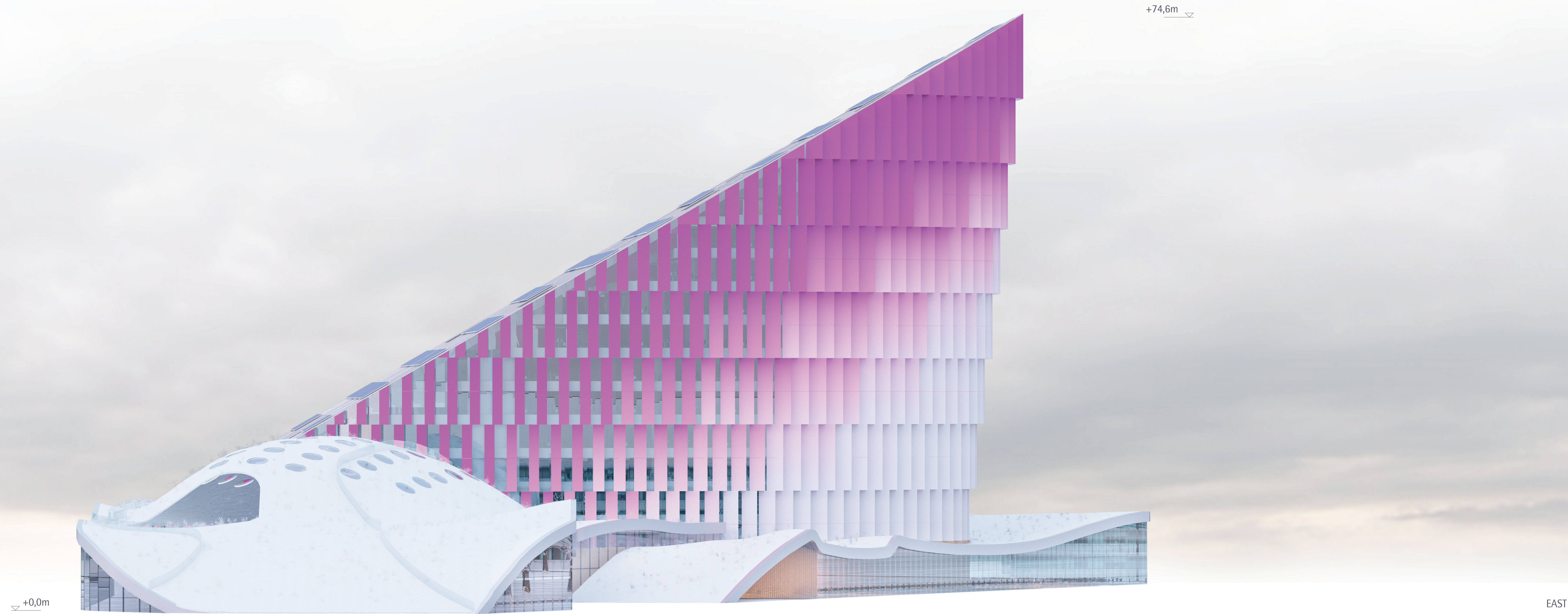


CROSS SECTION A-A



CROSS SECTION B-B





+0,0m

EAST



NORTH



▽ +74,6m

WEST

▽ +0,0m



SOUTH

+20,2m ▽

