

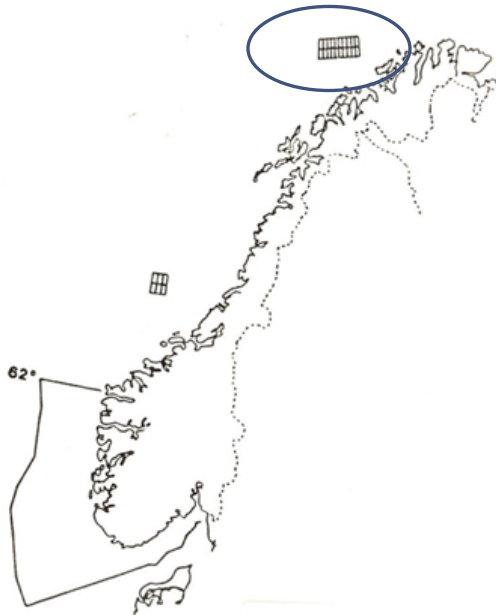


Hoop exploration programme 2014

34 years of exploration experience in the Barents Sea

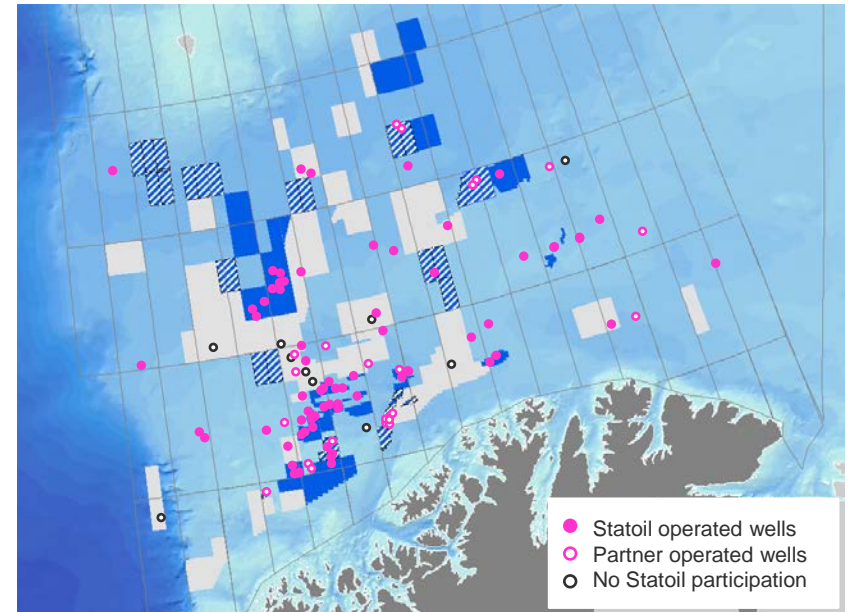
Strong experience basis for the Hoop operations

1980



First Barents Sea licences awarded
Statoil starts drilling first Barents Sea well

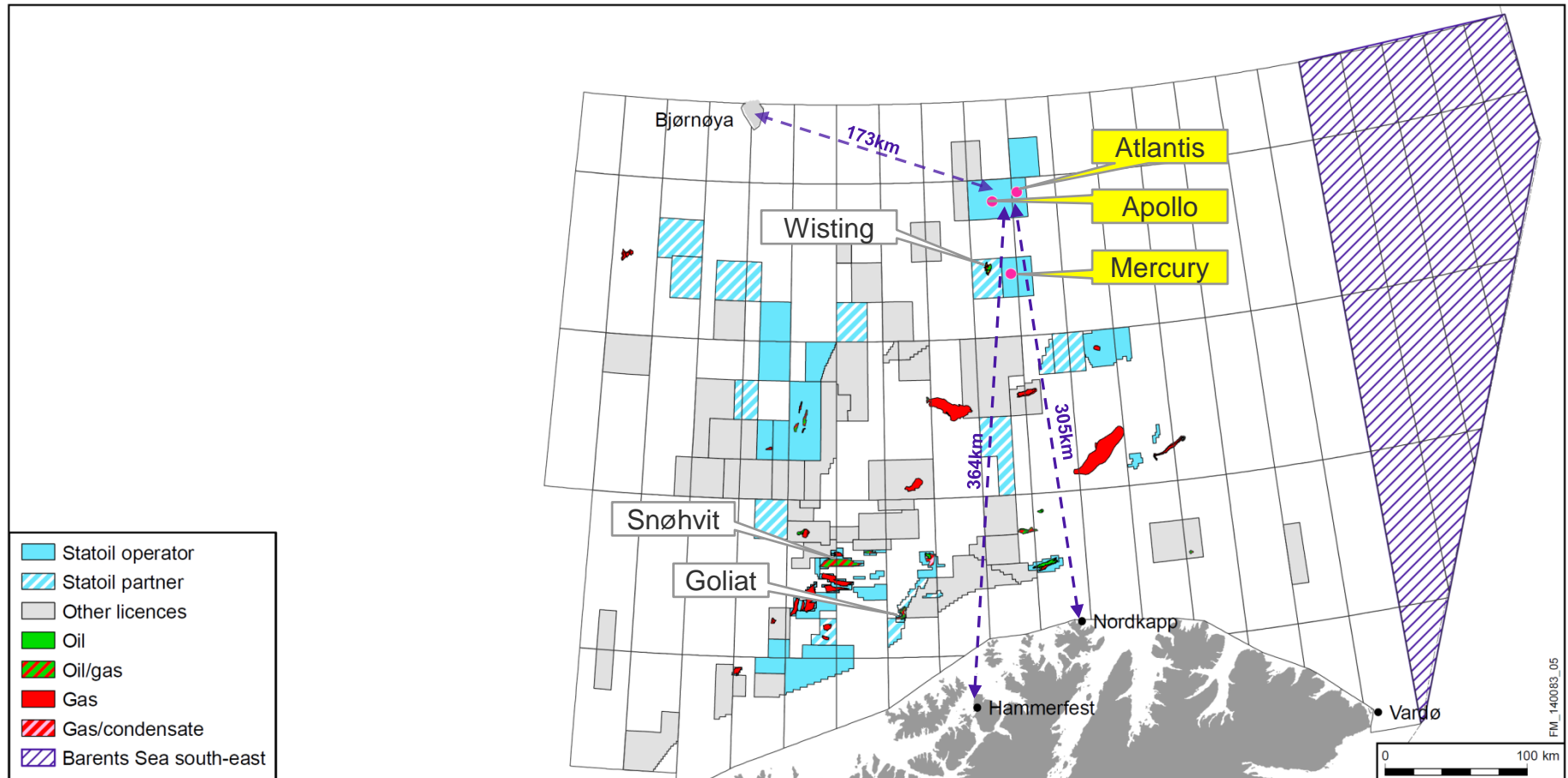
2014



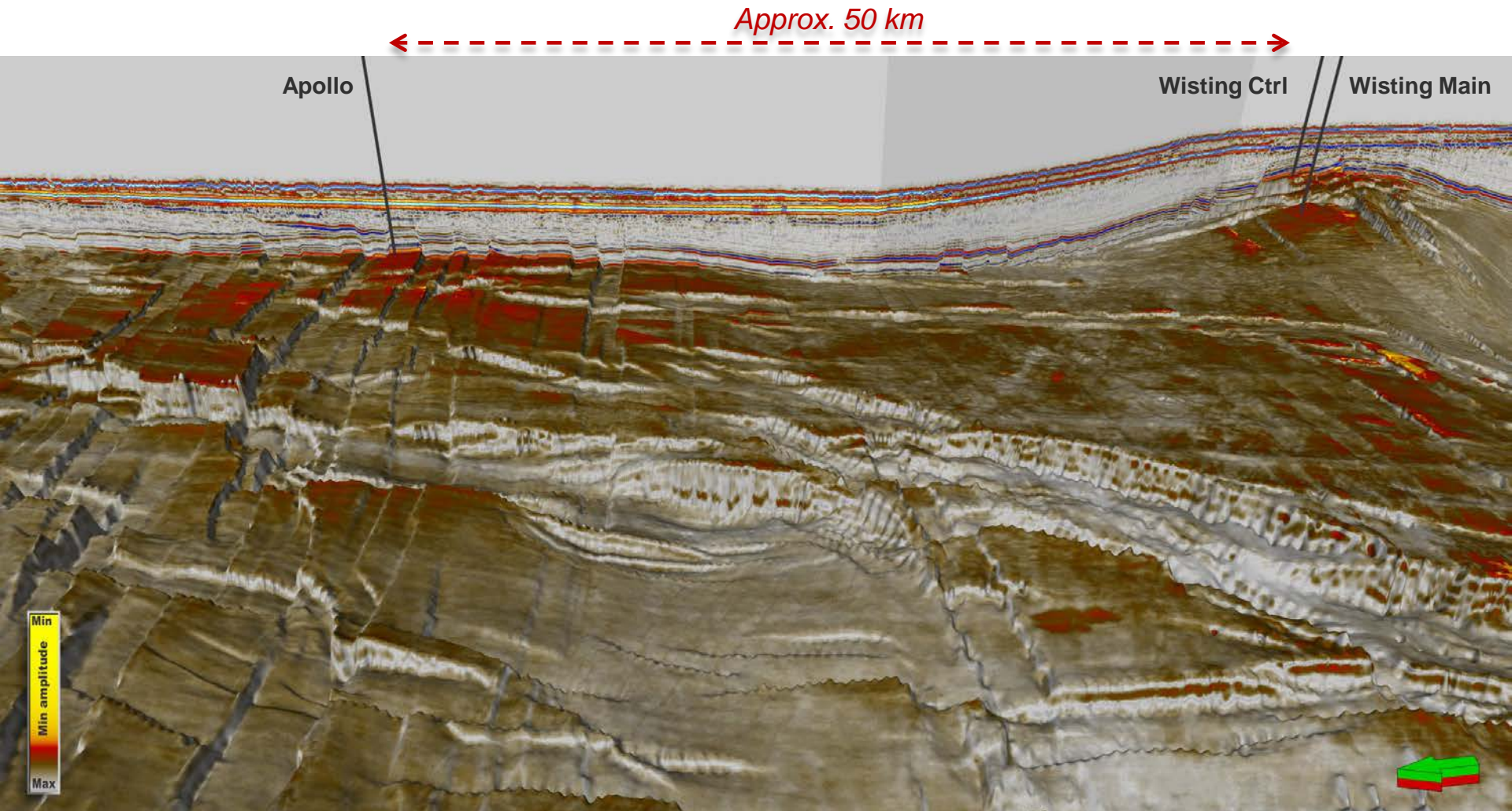
Operator in 72 of 109 exploration wells drilled to date
Participated in 98 of 109 exploration wells drilled to date

Hoop exploration programme 2014

Three operated wells to be drilled June – September 2014



Solid subsurface knowledge of the Hoop area



Top Realgrunnen amplitude map
Apollo (to be drilled) to Wisting Central (drilled 2013) & Wisting Main (to be drilled April 2104)
View from West

Standard wells at a longer distance from land

Standard exploration wells similar to previous operations in the Barents Sea

Low pressure and
low temperature wells

Normal water depth

Environment and climate
conditions similar to earlier
operations

Longer distance from land compensated by

Extra measures
helicopter transport



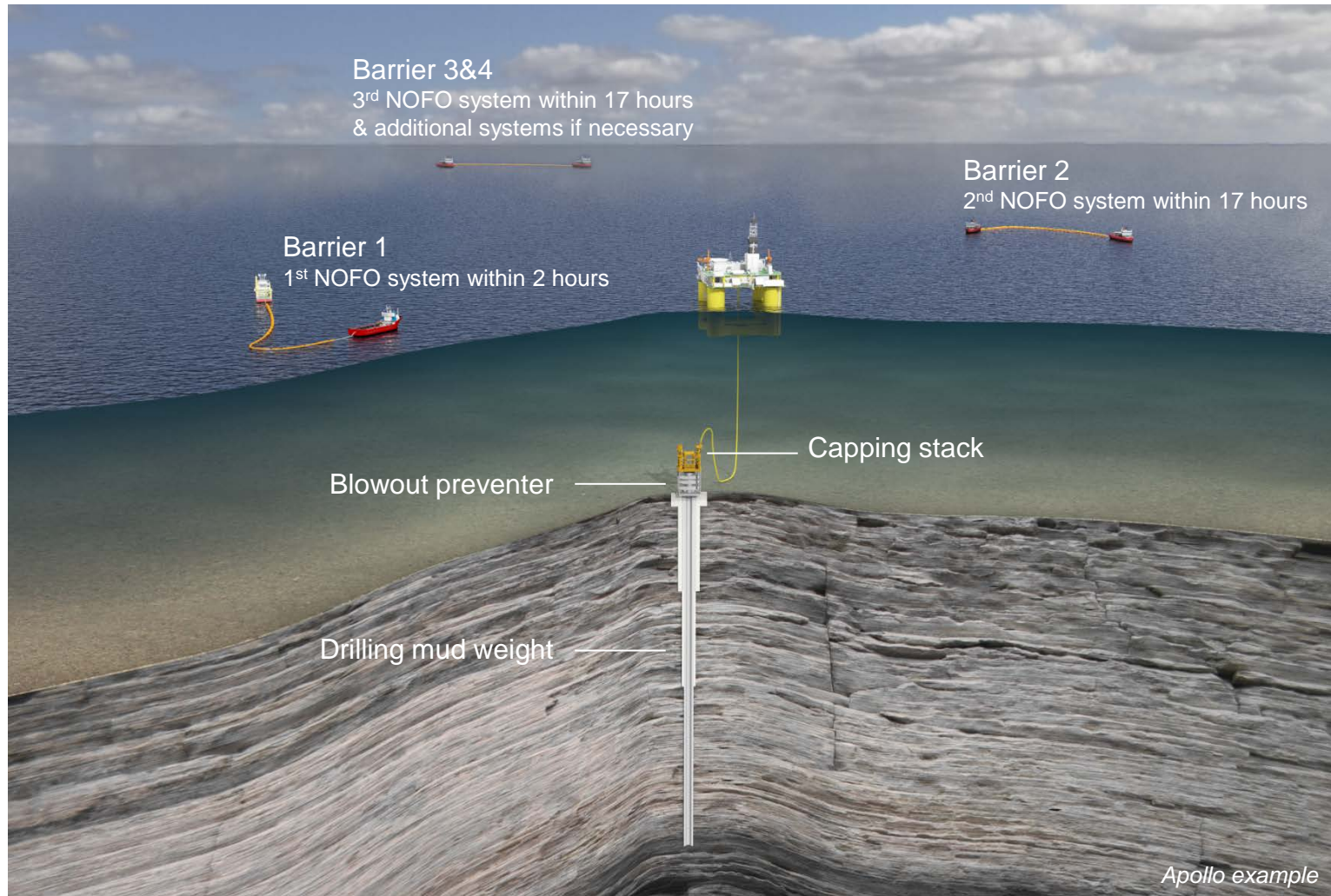
Extra measures
medical assistance



Advanced stand-by vessels



Robust oil spill contingency



Barriers
to recover
spilled oil

Barriers
in the well
to prevent
oil spill

Significant distance to Bear Island and ice*

Sufficient to recover spilled oil in open water

Distance	Minimum drifting time <i>with no oil spill response</i>
Apollo to Bear Island	
173 km	6.7 days
Apollo to ice*	
235 km (May)**	59 days
Troll to shore	
60 km	2 days

* Average distance during 2000-2010 from well location to 10-30% ice in sea water

** June-October – no issue at all

Very low probability of oil reaching Bear Island



Given *absolutely no oil spill response*, the statistical risk of both a blowout and that the oil spill from this blowout reaches Bear Island is:

- Surface blowout: **1 in 17 million***
- Subsea blowout: **less than 1 in 5 million***

These figures are calculated for a case with absolutely no oil spill response, while in reality the first NOFO oil recovery system will be deployed on-site maximum two hours after an incident, further reducing the risk.

* For the Apollo well. The risk for the Atlantis well is even lower.